

**CHUCK**

Stationary Gripping Meter JFT-S100

Gripping force can be checked at a glance!

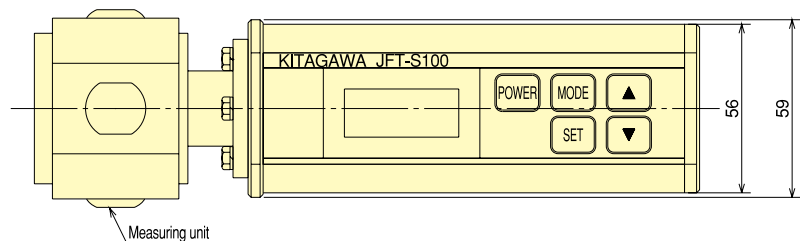
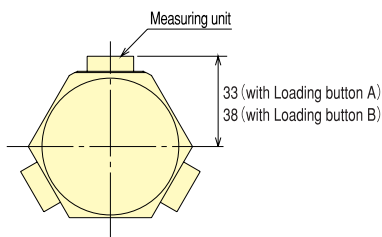
Compact design with excellent workability
Chuck gripping force is quantified, thus improving quality control and safety!

- **Compact and integral**
Integrated detector and display. Easy to handle with a low weight of only 1.3kg!
- **Zero adjustment NOT required**
Enables quick measurement with the automatic zero adjustment function!
- **Measured value memory function**
Stores three required measured values, and enables later checking.
- **Power-saving function**
Saves power with the automatic power-off function.
- **Battery voltage drop, excessive input, out-of-range zero adjustment, etc.**

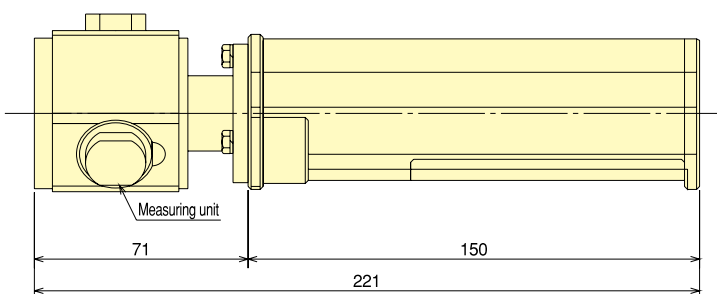
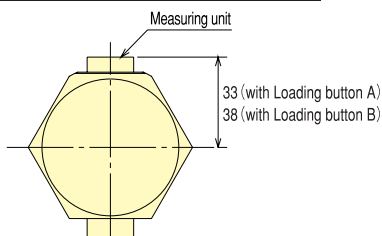


Dimensional Drawings

When the number of gripping points is 3.



When the number of gripping points is 2.



Specifications

Loading Cell	
Constant Capacity(per jaw)	100 kN
Allowable load	150 %
Gripped points	Two or three positions
Accuracy	±2 % R.O.
Measurable diameter	φ62~φ65mm (with Loading button A) φ62~φ75mm (with Loading button B)

Display	
Max. Display	110.0 kN
Display unit	0.1 kN
Operation Switch	Sheet Switch Panel
Display unit	LCD Character display (8×2 line with Back light)

Others	
Power	Lithium Battery (CR123A) ×2sets
Operation Temperature	0~50°C
Operation Humidity	80%RH or less
Weight	1.3 kg
Accessory	Loading button A (H 7mm) ×3pieces Loading button B (H 12mm) ×3pieces Battery for operation check (CR123A×2pieces)