

# JIMTOF2018

Exhibit products guide

The logo for Kitagawa, featuring a stylized blue and white 'k' icon followed by the word 'itagawa' in a bold, black, sans-serif font.

Please come and  
see us at

**W2052**

We look forward to  
all of you coming.



with HANDS, with SURPRISE !

Our products for JIMTOF 2018 are briefly  
introduced in this booklet.  
Please visit us at W2052.

# JIMTOF2018

Thu., 1 November - Tue., 6 November

**TOKYO BIG SIGHT**  
(Tokyo International Exhibition Center)

9:00~17:00

Kitagawa Corporation Booth : W2052 in West Hall 2

## Exhibits for JIMTOF2018

Next Generation Standard Chuck **BR Series**

Thin Type Dual Lock Chuck **HGPF64-203**

Top-Jaw Change Type chuck **AJC**

Indexing Chuck **KMD260**

Dual Lock Chuck **DL206**

Power Wing Chuck **PW-08**

Pull Lock Chuck **PU208**

Through-hole Pull Lock Chuck **PUB208**

Strong & Compact NC Rotary Table **MK200**

Strong & Compact NC Rotary Table **MK250**

Low Maintenance Tilting NC Rotary Table **RKT180**

Tilting NC Rotary Table **TT150**

High Speed NC Rotary Table **DS250**

Manual Operating Pendant for **Quinte**

General Purpose Gripper **NTS Series**

Parallel Gripper with Through-hole **NTB**

Face Plate Change Type **Quick Change Gripper**

**Quick Change Jaw**

2-jaw Parallel Thin Gripper **NPGT**

Action Loading Gripper **RLG**

This booklet contains the guide map of the exhibition halls. Please utilize it.

Next Generation Standard Chuck

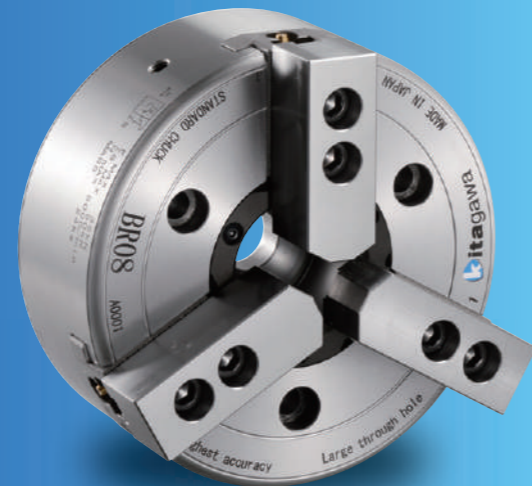
# BR Series

Higher-accurate standard chuck.

**Features**

- Gripping accuracy, 0.01 mm T.I.R. or less.
- Reduced jaw-lift.
- With the optional Plus T-nuts it will maintain a repeatability of 0.01 mm T.I.R. or less after changing jaws.

	BR06	BR08	BR10
Through-hole Dia	φ53mm	φ66mm	φ81mm
Jaw Stroke	5.5mm	7.4mm	8.8mm
Max. Speed	6000min <sup>-1</sup>	5000min <sup>-1</sup>	4500min <sup>-1</sup>
Max. Gripping Force	58.5kN	90kN	123kN
Max. Draw Bar Pull Force	23kN	35kN	49kN
Mass	12.8kg	22.2kg	35.8kg



Standard Chuck

Indexing Chuck

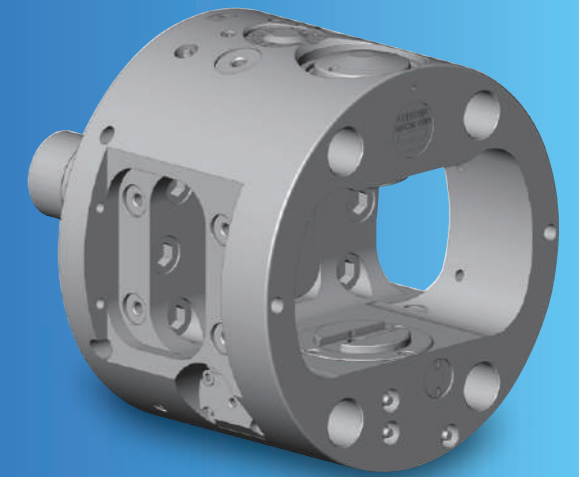
# KMD260

Able to index without unclamping workpiece.

**Features**

- Index 4 sides every 90 degrees.
- Index while rotating (at 30% - 50% of max. speed).
- Strong against coolant or swarf.
- Gripping force of clamp jaw is centrifugal-force-compensated.
- Reduce a weight 21% compare with existing model.

Max. Speed	3500min <sup>-1</sup>
Mass	40.8kg
OD	φ260mm
Thickness	183.5mm
Divisions	4C90°
Piston Stroke	19mm



Design Chuck

Thin Type Dual Lock Chuck

# HGPF64-203

Parallel gripping and pull back chuck with low-profile and light-weight body.

**Features**

- Parallel gripping and pull back chuck action eliminates jaw-lift and enables seating confirmation(at OD gripping).
- Stable clamping is achieved even at low draw bar pull, thus it is the best for workpieces easily deformed.
- Spindle acceleration time is reduced due to low moment of inertia.

Jaw Stroke	5.5mm
Max. Speed	5000min <sup>-1</sup>
Max. Gripping Force	57kN
Mass	18kg
OD	φ203mm
Moment of Inertia	0.1kg·m <sup>2</sup>



Design Chuck

Dual Lock Chuck

# DL206

2-step gripping.

**Features**

- 2-step gripping of parallel gripping and pull-lock gripping afterwards.
- Dust proof sealed body design for long life.
- Serrated Jaws are used allowing for easy jaw forming by customer.

Jaw Stroke	5.8mm
Max. Speed	6000min <sup>-1</sup>
Max. Static Gripping Force	54.0kN
Mass	18.0kg



Design Chuck

Top-Jaw Change Type chuck

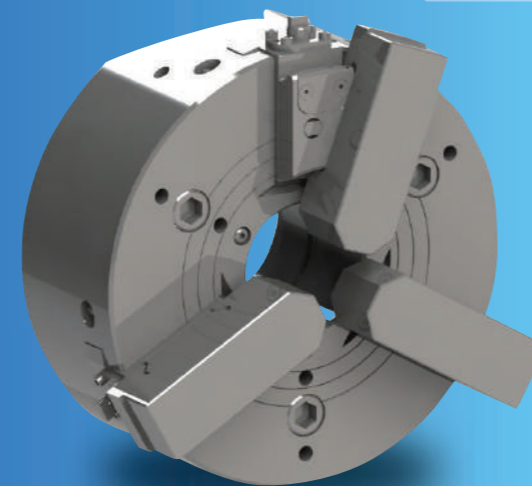
# AJC

Replace each Top-Jaw automatically.

**Features**

- For outside diameter gripping only.
- Manual exchange is also available.
- Automatic replace of each top jaw conforming with work piece.
- Possible to combine with a standard hydraulic cylinder.

Jaw Stroke	9.1mm
Max. Speed	3400min <sup>-1</sup>
Max. Gripping Force	99kN
Mass	36.3kg



Standard Chuck

Power Wing Chuck

# PW-08

Pull back of work piece for secure gripping of casting or forging part.

**Features**

- High gripping stability means heavy cutting is possible.
- Maintains stable gripping force for a long term.
- Jaws self-equalises for 5° at maximum.
- Allows 20° taper at maximum.
- Improved grease sealing.

Jaw Stroke	9.5mm
Max. Speed	3700min <sup>-1</sup>
Max. Gripping Force	96kN
Mass	23.5kg



Design Chuck

**Pull Lock Chuck**

# PU208

Stable high precision gripping suitable for finish machining.

**Features**

- High gripping stability means heavy cutting is possible.
- Excellent repeatability.
- Long-term stable accuracy.
- Compatible with automation by use of seating confirmation.

Jaw Stroke	5mm
Max. Speed	6000min <sup>-1</sup>
Max. Gripping Force	80.0kN
Mass	24.0kg

Design Chuck


**Through-hole Pull Lock Chuck**

# PUB208

Draw down for high-precision machining. Open centre type accommodates shaft processing.

**Features**

- Appressing workpiece to locator enables stable heavy cutting without lifting up.
- Excellent repeatability due to backing up sliding surface of master jaws.
- Long-term stable accuracy.
- Compatible with automation by use of seating confirmation.

Jaw Stroke	5mm
Max. Speed	6000min <sup>-1</sup>
Max. Gripping Force	80.0kN
Mass	25.3kg

Design Chuck


**Strong & Compact NC Rotary Table**

# MK200

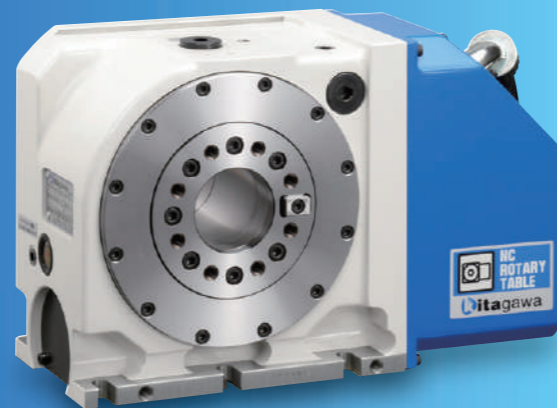
Kitagawa's latest compact NC rotary table has arrived with high-performance and easy-to-use.

**Features**

- Large capacity provides the highest specifications in its class.
- MK200 can be installed by inserting bolts from the top without clamping devices. The effective thickness is only 155mm.
- Wide selection of rotary joints enables diversity of fixtures.
- 25 MPa high pressure rotary joints are available for miniaturization of fixtures and fast action.

Table Dia	φ135mm
Centere Height	140mm
Registered Diameter of Table	φ65H7
Clamping Torque	570N·m
Max. Speed	33.3min <sup>-1</sup>
Indexing Accuracy	20sec

NC Rotary Table


**Strong & Compact NC Rotary Table**

# MK250

Kitagawa's latest compact NC rotary table has arrived with high-performance and easy-to-use.

**Features**

- MK250 can be installed by inserting bolts from the top without clamping devices. The effective thickness is only 164mm.
- Wide selection of rotary joints enables diversity of fixtures.
- 25 MPa high pressure rotary joints are available for miniaturization of fixtures and fast action.

Table Dia	φ155mm
Centere Height	180mm
Registered Diameter of Table	φ70H7
Clamping Torque	1000N·m
Max. Speed	33.3min <sup>-1</sup>
Indexing Accuracy	20sec

NC Rotary Table


**Low Maintenance Tilting NC Rotary Table**

# RKT180

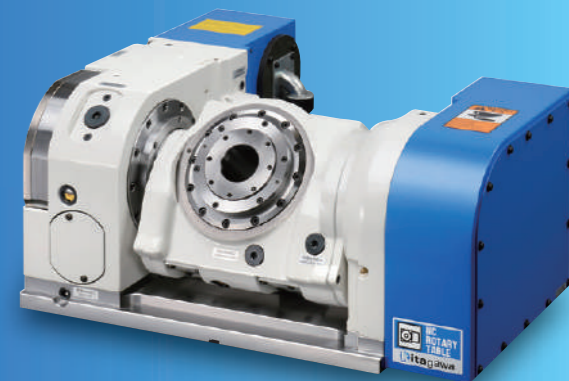
Designed as the optimum solution for the automotive industry. Maintenance saving tilting NC rotary table.

**Features**

- Designed to provide the optimum solution for No. 30 compact machining centre (100 mm high column).
- Complete built-in rotary joint available. (hydraulic: 5 ports, pneumatic: 1 port)
- Flush surface design simplifies checking interference with machining centre.
- Maintenance saving is achieved by gear and cam structure.

Tilting Angle	-35°~+110°	Max Speed	Rotating Axis 41.6min <sup>-1</sup>
Table Dia	φ95mm		Tilting Axis 25min <sup>-1</sup>
Centere Height	170mm	Indexing Accuracy	Rotating Axis 20sec
Clamping Torque	Rotating Axis 350N·m		Tilting Axis 20sec
	Tilting Axis 550N·m	Allowable Load	at Horizontal 60kg at Tilted 40kg

NC Rotary Table


**Tilting NC Rotary Table**

# TT150

Enables 5-face machining.

**Features**

- High rigidity and highly improved clamping torque.
- Compact designed body with minimized total height keeps less high-column of machine.
- Optional complete built-in rotary joint supports simple and secure piping for fixtures.

Tilting Angle	-20°~+110°	Max. Speed	Rotating Axis 41.6min <sup>-1</sup>
Table Dia	φ150mm		Tilting Axis 16.6min <sup>-1</sup>
Centere Height	150mm	Indexing Accuracy	Rotating Axis 30sec
Clamping Torque	Rotating Axis 350N·m		Tilting Axis 60sec
	Tilting Axis 550N·m	Allowable Load	at Horizontal 50kg at Tilted 30kg

NC Rotary Table



**High Speed NC Rotary Table**

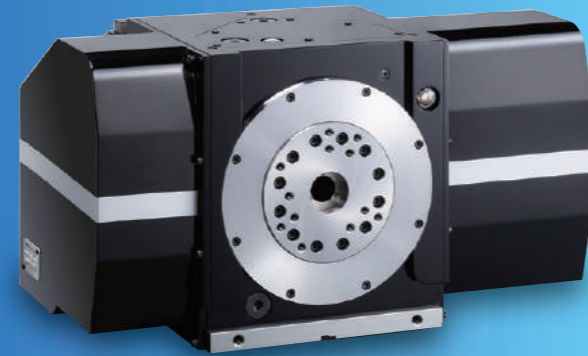
# DS250

 First in the world, Max. 1000min<sup>-1</sup> is achieved by a servomotor.

**Features**

- Maximum speed: 1000min<sup>-1</sup>.
- Combined machining is possible with 4-axis machining centre. Less setup time and process integrating are achieved.
- Equipped with the original deceleration ratio change mechanism.

Table Dia	φ100mm
Centere Height	180mm
Clamping Torque	250N·m
Max. Speed	Turning Axis 1000min <sup>-1</sup> Indexing Axis 25min <sup>-1</sup>
Indexing Accuracy	120sec
Allowable Load	Turning Axis / Horizontal 50kg Vertical 50kg
	Indexing Axis / Horizontal 250kg Vertical 125kg



NC Rotary Table

**Parallel Gripper with Through-hole**

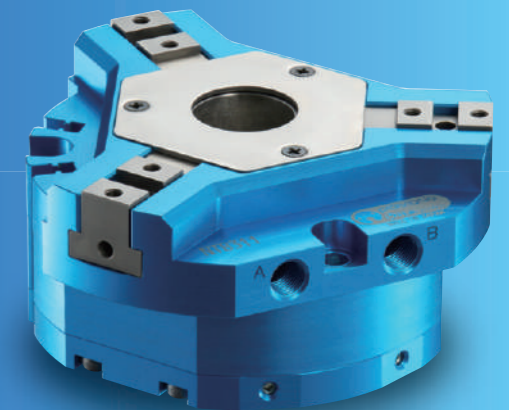
# NTB

Large through-hole suitable for various fixtures.

**Features**

- Improved durability, swarf protection and maintainability.
- High Gripping force for stable gripping of heavy work piece.
- Light and compact Body not limiting load capacity of robot.
- New mounting style for minimum protrusion compared with conventional models.
- Improved gripping accuracy due to highly rigid body.

Model	NTB309	NTB311	NTB313
Thru-Hole	14.3mm	25mm	29.9mm
Max. Gripping Force (at 0.6 MPa and OD gripping)	846N	1269N	2766N
Jaw Stroke	12mm	16mm	20mm
Operating Pressure	0.2~0.8MPa		
Mass	0.7kg	1.2kg	2.1kg



Gripper

**Optional Pendant Switch for Quinte Controller**

# Manual Operating Pendant for Quinte

Compact manual operating pendant switch.

**Features**

- It is able to be additionally installed to existing Quinte (depending on servo version).
- It enables to operate a rotary table with looking at movement near by.
- Functional colour and key layout provide good visibility and operability.
- Organic display ensures visibility even in dark machines.
- Capacitance touch switch realizes smooth touch operation.

Size	219.5□121□51mm	Function	Angle display	Alarm information
Cable Length	3m		Zero set	Zero return
Safety	Emergency stop button	Jog feeding		
	Enable switch	Manual pulse feeding		



NC Rotary Table

**Quick Change Gripper**

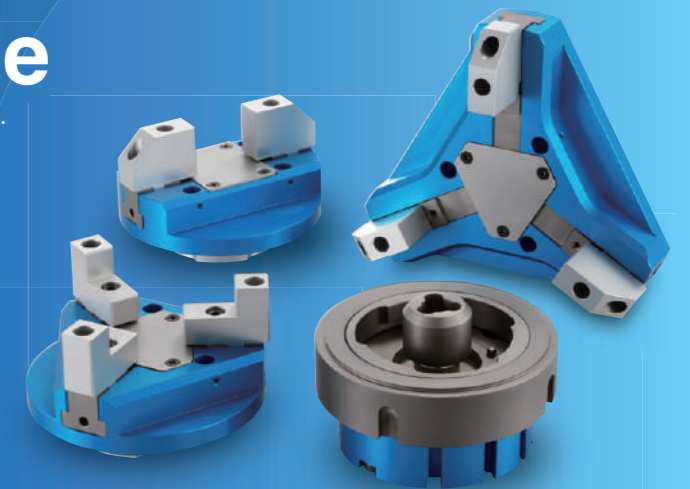
# Face Plate Change

Suitable for robot application of high-mix low-volume production.

**Features**

- Light exchange parts simplifies and quickens setup change.
- Starting up time reduced for new workpiece.
- Cost reduction by less changing parts.
- Manual setup change minimizes number of teaching points.

<b>QGB08+QG30810, QG30815(3-jaw), QG20810(2-jaw)</b>	
Max. Gripping Force (at 0.6 MPa and OD gripping)	925N
Jaw Stroke	15.6mm
Operating Pressure	0.2-0.8MPa ※0.2-0.6 MPa for 2-jaw type
OD	φ98mm
Mass	QGB08: 1.15kg, QG20810: 0.40kg
	QG30810: 0.55kg, QG30815: 0.90kg
Thickness	73mm



Gripper

**General Purpose Gripper**

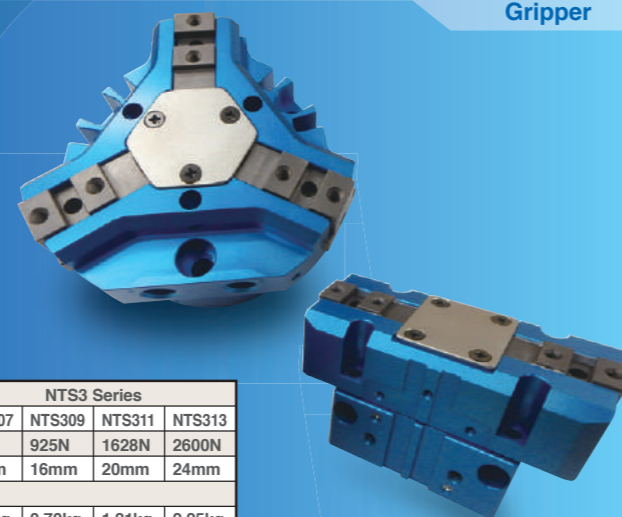
# NTS

Standard Series with High Quality and High Durability.

**Features**

- Swarf protection and maintenance improved.
- High Gripping force for stable gripping of heavy work piece.
- Light and compact Body not limiting load capacity of robot.
- New mounting style for minimum protrusion compared with conventional models.
- Improved gripping accuracy due to high rigidity body.

	NTS2 Series					NTS3 Series			
	NTS206	NTS208	NTS210	NTS212	NTS216	NTS307	NTS309	NTS311	NTS313
Max. Gripping Force (at 0.6 MPa and OD gripping)	215N	369N	553N	759N	1194N	587N	925N	1628N	2600N
Jaw Stroke	12mm	16mm	20mm	24mm	32mm	12mm	16mm	20mm	24mm
Operating Pressure	0.2~0.8MPa								
Mass	0.29kg	0.48kg	0.78kg	1.34kg	2.51kg	0.40kg	0.70kg	1.21kg	2.25kg



Gripper

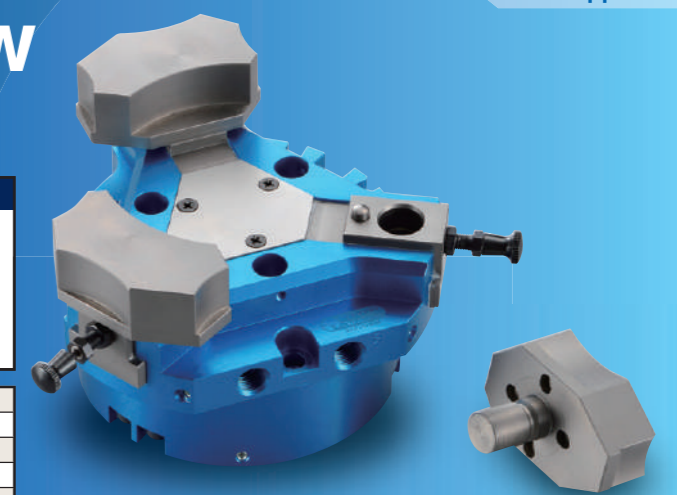
# Quick Change Jaw

A quick jaw exchange and new gripping confirmation are achieved.

**Features**

- Reduce a jaw exchange time.
- Possible to set more than one kind of grip face per one set of jaw and improving multi-usage of jaws.
- Possible to divert NTS gripper body. (Exchange master jaw only).
- Gripping confirmation at jaw grip face is available by connecting an air circuit to master jaw. Thus it can detect small stroke.

<b>NTS311+NTS-QM311(or NTS-QM311A)</b>	
Max. Gripping Force (at 0.6 MPa and OD gripping)	1628N
Jaw Stroke	20mm
Operating Pressure	0.2~0.8MPa
Mass	1.29kg



Gripper

### Thin Body 2-jaw Gripper

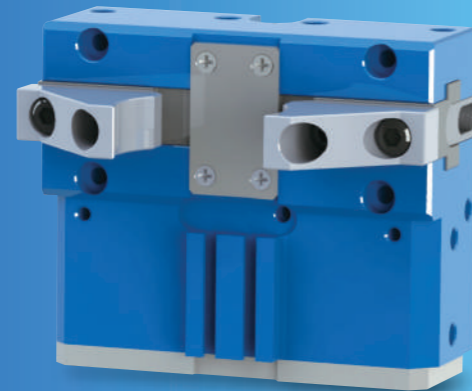
# NPGT

2-jaw high-end model.

#### Features

- High accuracy and high durability.
- Maximum gripping force in its class.
- Ultra thin and light body.
- High added value by various sensors of options.

Model	NPGT08	NPGT10
Max. Gripping Force (at 0.6 MPa and OD gripping)	750N	1160N
Jaw Stroke	16.6mm	20.8mm
Operating Pressure	0.2~0.8MPa	
Mass	0.79kg	1.25kg
Thickness	36mm	41mm



Gripper

### Action Loading Gripper

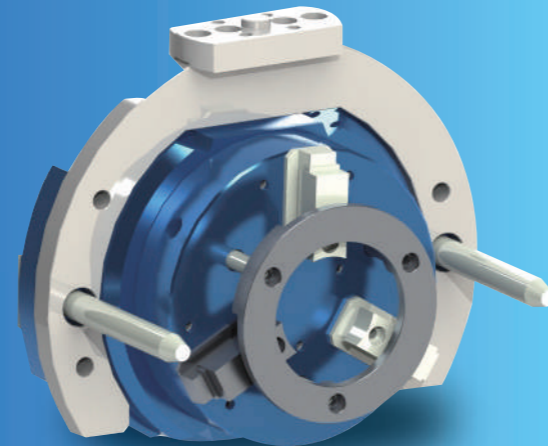
# RLG

Workpiece loading whilst spindle is turning.

#### Features

- Tact time reduced due to loading work piece during spindle turning.
- Suitable for General purpose Articulated Robot.
- Light and compact Body.
- Waterproof, Dustproof.
- Kitagawa can supply the product together with lathe chuck application.

Max. Gripping Force (at 0.6 MPa and OD gripping)	700N
Jaw Stroke in Dia	8mm
OD	φ125mm
Mass	4.0kg
Rotating Speed	500min <sup>-1</sup>



Gripper

# JIMTOF2018

Exhibitors list

# Exhibitors list

企業名	小間番号	企業名	小間番号	企業名	小間番号	企業名	小間番号	企業名	小間番号	企業名	小間番号
A.L.M.T.Corp	W1008/W4022	CITIZEN MACHINERY CO.,LTD.	E5018	FUCHS JAPAN LTD.	E2007	HIWIN CORPORATION	W2049	KAGAKU KEIKI KENKYUSHO CO.,LTD.	E6017	KYORITSUSEIKI CORPORATION	W2066
ABICO R&D CO.,LTD.	E6015	CKB CORPORATION	E2013	FUJI BC ENGINEERING CO.,LTD	W3039	HMS Industrial Networks K.K.	E7075	Kaifeng Besco Superabrasives Co.,Ltd	W3046	KYOUIKU GEAR MFG.CO.,LTD.	W4085
Adcole Far East Ltd.	E7113	CKD Corporation	W4049	FUJI CORPORATION	E2028	Honda plus Co.,Ltd.	W1062	Kamakura Seisakusho Co., Ltd.	E7103	Kyouwa Oil Lubricants Co., Ltd.	E1020
AeroEdge Co., Ltd.	E7070	CNK CO.,LTD	W3086	FUJI DIE CO., LTD.	W1016	Honma Precision Metalworking Co.,Ltd.	E1034	Kan Mechanical Industry,Inc	E7003	KYOWA CO.,LTD	W1068
AFC Japan Corporation	W1039	COMINIX CO.,LTD	W1078	FUJI GRINDING WHEEL MFG.CO.,LTD.	E3010	HONMA SHOKAI Co.,LTD	W3071	KANAGATA SHINBUN CO.,LTD.	WA063	KYUSHU KOGU CO.,LTD.	W2011
Ai Solutions Co.,Ltd.	E5029	Computer Engineering & Consulting, Ltd.	E5030	Fuji Honing Industrial Co.,Ltd.	E1054	Honsberg MetalsÄgen GmbH	W3040	KANEFUSA CORPORATION	W1031	L AND M Corporation	E7093
AICHI SANGYO Co.,LTD	E5039	CORETECH Co.,Led.	E7115	FUJI INDUSTRIES CO., LTD	W1019	HORKOS CORP	E2012	Kanematsu KGK Corp.	E2017	LEISTRITZ PRODUKTIONSTECHNIK GMBH	E6034
AKAMATSU ELECTRIC MFG.CO.,LTD	W2068	COUTH Industrial Marking Systems	W3023	FUJIKIKO CO.,LTD	E7051	HORN, Paul Horn GmbH	W3006	KANETEC CO.,LTD.	W2014	Levicron GmbH	W3069
AKATSUKI MFG. CO., LTD.	E7136	CREATE ENGINEERING CORPORATION	W3034	Fuji Seimitsu Co.,Ltd.	E7060	Howa Machinery, Ltd.	E4021	KANEX HAMONO KOGYO CO., LTD	W3011	LEYBOLD Co., Ltd.	E5050
Alfa Mirage Co.,Ltd	E7002	Crestech Corporation	W3043	FUJI TOOL CO., LTD.	E7122	HTT Tiefbohrtechnik GmbH	E1028	KANTO BUSSAN CO.,LTD	E2008	Li Hsing Precision Tool Co., Ltd.	W3025
ALPHA LASER JAPAN CO.,LTD.	E7095	CY CARBIDE MFG. CO., LTD.	W3067	FUJIGEN KOUGYOU CO.,LTD.	WA030	HUAWIN PRECISION LTD.	E1062	KANTO SEIKI	W2061	Licom Systems Corp.	E5034
ALPS TOOL CO., LTD.	E1039/W2013	Daido kogyo Kaisha,LTD.	W4037	FUJIKIKO CO.,LTD	E1085	Hunan Boyun-dongfang Powder Metallurgy Co.,Ltd	W3032	KANZAKI KOKYUKOKI MFG.CO.,LTD.	E3028	Liebherr-Verzahntechnik GmbH	E6022
AMADA HOLDINGS CO., LTD.	E1030	Daido Steel Co., Ltd.	W1010	Fujikura Ltd.	E2018	HYDAC CO., LTD.	W4059	KARATS PRECISION, INC.	E2019	Lien Chieh Machinery Co., Ltd	W3091
AMETEK Co., Ltd	E7019	DAI-ICHI SOKUHAN WORKS CO.	E7025	FUJIMOTO YUKA CO.,LTD.	E1019	ICHIGUCHI corporation	W4012	KARCHER JAPAN Co.,Ltd.	E7033	LNS Management SA	E3004
ANADOKUHAN CO.,LTD.	E6035	DAIICHSANGYO CO.,LTD	WA010	FUJISANGYO. CO.,LTD.	E3023	ICHIKAWA GRINDER MFG.CO.,LTD	E6027	KARL STORZ ENDOSCOPY JAPAN K.K.	E7015	LUBE corporation	W2058
Applied Automation Technologies	E5038	DAIKIN Industries, LTD.	W4055	FUJISEIKO LIMITED	W1044	ICHINEN CHEMICALS Co.,Ltd.	E7040	KASHIFUJI WORKS,LTD.	E3029	lubysil japan kk	E4001
AQUA CHEMICAL CO.,LTD.	E7048	DAITOH SPINNING CO.,LTD	E1066	FUJITA SHOJI CO.,LTD.	E6008	IDEC CORPORETION	W3049	KATO MFG.CO.,LTD.	W2019	LUOYANG RUNBAO SUPER ABRASIVES CO., LTD	W3019
AREUSE Co.,Ltd	WA018	DAIWA DENGYO CO., LTD	E7057	Fukuda Corporation	E6001	Idemitsu Kosan	W4060	KAWAI ENGINEERING Co.,LTD	W1015	LuoYang YuXin Diamond Co., Ltd.	W3012
A-RYUNG MACHINERY IND. CO., LTD.	W4072	Daiwa Kasei Kogyo Co., Ltd	W4015	FUNASAW CO.,LTD	E6003	ITEMCA A BUCCI AUTOMATIONS SPA DIVISION	W3099	KAWASAKI TECHNOLOGY CO.,LTD.	E5049	LUREN PRECISION CO., LTD.	E3034
ASA Electronics Industry Co.,LTD	WA2008	DAIWA KIKO CO., LTD.	W4028	Fuqing Lanjin New Material Technology Co Ltd	W4036	ifm efector co.ltd.	E7085	KAWAZA CHUCK MFG.CO.,LTD	W2055	M.T. s.r.l.	W4089
Asahi Diamond Industrial Co., Ltd.	W4017	Data Design Co., Ltd.	E4026	FURUKAWASEIKI	WA047	IGUCHI KIKO CO.,LTD.	W3082	KAWATATEC CORP.	W2054	MA TOOL CO.,LTD.	W1049
Asanuma Giken Co., Ltd.	E7005	detron Machine co.,Ltd	W3062	FUTAMURA MACHINES&TOOLS	W2060	igus k.k.	E3012	KEBA Japan Co., Ltd.	E7043	MACHINESOL Co., Ltd.	E5031
ASK CORPORATION	W4070	DEUBLIN JAPAN LIMITED	WA049	Future Life Technology Co., Ltd.	E4031	IHI Corporation	WA015	KEIJI KOUSAN Co., Ltd.	W2062	MACNICA, Inc.	E3009
Asmith Manufacturing Company	W3087	DIATEST JAPAN LTD.	E7137	GANRO INDUSTRIAL CORP.(JAPAN)	W2026	IKEGAI CORPORATION	E4028	Kennametal Japan Ltd.	W1027	MAEDA SHELL SERVICE CO., LTD.	W4042
ASTEC CO.,LTD	E5052	DIJET INDUSTRIAL CO.,LTD.	W1046	GEMtool CO., LTD.	W3001	IKURA SEIKI CO.,LTD	E1076	KENSAKUKENMA Co.,Ltd.	E1003	Magnescape. Co., Ltd	E7129
ATAGO CO.,LTD.	E7131	Dimach Co., Ltd.	E5046	Genetec Corporation	E5016	ILJIN JAPAN	W4006	KENT INDUSTRIAL CO.,LTD	E4010	Magtronics Co.,Ltd.	E5043
Atsuchi Tekko CO.,LTD.	W4071	DKSH Japan K.K.	W3093	GENIO Solutions Co.,Ltd.	E7067	IMAHASHI MFG.CO.DLTD.	E1001	KEYARROW(TAIWAN)CO., LTD.	W3077	Mahr Japan Co., Ltd.	E7121
AUTHENTEC CO.,LTD	E1031	DMG MORI CO., LTD.	E8001	GF Machining Solutions Ltd.	E2005	IMAO CORPORATION	W2002	KEYENCE CORPORATION	E7094	Mair Research S.p.A	E6036
AutoCam Technology Co.,LTD	W3096	Doi Precision Lapping Co., Ltd	E7024	GIFU ENTERPRISE CO., LTD.	W3080	improbe	E5032	KF Carbide JapanCo., Ltd.	W1059	Makino Milling Machine Co.,Ltd.	E2011
Autodesk Ltd. Japan	E4032	DONGGUAN HIPPSO HARDWARE MACHINERY CO LTD	WA031	GIN-YEH TECHNOLOGY INDUSTRY CO.,LTD	E3046	INCOM Company LTD.	WA064	Kimura Corporation	WA035	Makino Seiki Co., Ltd.	E1048
awa spindle co.,Ltd.	E7008	DP Technology Japan K.K.	E5012	Gleason Asia Co., Ltd.	E6007	INDSPHINX PRECISION LTD UNIT-B	W4007	Kintsune seiki Co.,Ltd	E7047	MAKOTOLOY Co.,Ltd	W1040
Ayabo Corporation	WA011	DT technologies CZ s.r.o.	WA039	Gleason-Saikuni Co., Ltd.	E6006	INKALOY Corporation	E7096	KIRACORPORATION	E1044	MANYO TOOLS CO., LTD.	W1006
B.C TECH CO.,LTD	W2043	DTR Corporation	W4087	GLOBAL DIAMOND CO.,LTD.	W4018	Integra Research Co., Ltd.	E5025	KISOH CORPORATION	E7052	MAPAL KK	W1024
B2B Support of Osaka Prefecture	W3092	DURIMITEC Co.,Ltd.	W4079	GNS Co., LTD.	W3041	INTERNATIONAL DIAMOND INC.	W4002	Kisteln Japan Co., Ltd.	E7086	Marposs Kabushiki Kaisya	E7138
Balluff Co., Ltd	W4073	DYC CO., LTD.	WA027	Gosho Co., Ltd.	E3038	ISCAR JAPAN LTD.	W1013	KISTEM Co.,Ltd	E5028	MARUBENI INFORMATION SYSTEMS CO.,LTD.	E7114
Bando Chemical Industries,Ltd.	E7049	DYNAMICTOOLS	W2063	Gravotech K.K.	E7044	ITOCHU MACHINE-TECHNOS CORPORATION	E6005	Kitagawa Corporation	W2052	MARUEI MACHINE WORKS CO., LTD.	E1053
Baykal Japan	E1058	DYNATEC CO LTD	W4043	GREEN TOOL Co.,LTD	W1004	ITochu Techno-Solutions Corporation	E5036	kitai sangyo co,ltd	E1040	MARUICHI CUTTING TOOLS CO.,LTD.	WA005
Beckhoff Automation K.K.	E5035	EASTERN TECHNICS Corp.	E1014	GREENTECH JAPAN CO.,LTO.	E7098	IWAMA Co., LTD.	E4013	kitamura machinery co.,ltd.	E4023	Maruka Machinery Co., Ltd.	E7112
Beijing Grish Hitech Co Ltd	W4039	EBA KOGYO CO.,LTD.	E1047	GROBAL PARTS CORP.	E7111	IWASHITA INDUSTRIAL CO.,LTD.	E5042	Kitamura Machine Works Co., Ltd.	E1045	Materialise KK	E7101
Beijing Moving-Goods Precision Racks Co.,Ltd	W4076	Edgecross Consortium	E5048	GRUNDFOS PUMPS K.K.	W4041	Iwata Saw Mfg. Co., Ltd.	W1038	KITAOKA Industrial, Inc.	WA043	MATSUDA SEIKI CO.,LTD	E1049
BICTOOL Co., LTD.	W1050	EGURO.LTD	E2015	GSA TECHNOLOGY CO., LTD.	W4052	IWATA TOOL Co.,Ltd	WA034	KIWA MACHINERY CO.,LTD.	E5024	MATSUMOTO MACHINE CO., LTD	W2032
BIG DAISHOWA SEIKI CO.,LTD.	W2048	eifeler-Vacotec GmbH	W3014	GUANGZHOU LINK AUTOMATION EQUIPMENT CO.,LTD	W4083	IZUMI CORPORATION	WA048	KLINGELNBERG (JAPAN) LTD.	E1082	MATSUOKA CUTTER MFG.CO.,LTD	W1056
Blaser Swisslube Japan Co.,Ltd.	E6004	EIKO ELECTRIC INDUSTRIAL CO.,LTD	WA020	GUHRING JAPAN Co.,LTD	W1070	IZUSHI AND CO., LTD.	W4063	KOBAYASHI IRON WORKS CO.,LTD	W2016	Matsura Machinery Corporation	E3016
BLESS INC.	W3070	EIKOSHA CO.,LTD	W1003	Guilin Digital Electronic Co., Ltd	E7135	JAPAN AUTOMATIC MACHINE CO.,LTD.	W2064	KOBAYASHI MACHINE MFG.CO.,LTD.	W1005	MECTRON INC.	E1055
Blum-Novotest K.K	E7118	EISEN co.,ltd	E7089	GUNKYO,INC.	E7041	Japan Aviation Electronics Industry Limited	E7104	KOBE STEEL, LTD.	E7050	MEGA MACHINE CO.,LTD	E3047
BP JAPAN K.K.	E3011	Eishin Techno Co.,Ltd.	W3095	HABOR PRECISE INC.	W3003	Japan Coating Center Co., Ltd.	W1021	Kodama Corporation, Ltd.	E4024	Meiko Industry Co., Ltd.	W4066
Brains Technology, Inc.	E7072	ELENIX, Inc.	E3025	Haimer Japan	W3089	JAPAN GAUGE CO., LTD.	E7018	KOHARA GEAR INDUSTRY CO.,LTD	W4086	MEIKO MACHINE CO.,LTD	W4096
BRINKMANN PUMPS K.H.Brinkmann GmbH & Co. KG	W4061	EMG Lubricants G.K.	W4024	HAINBUCH Japan K.K.	E3022	JAPAN INDUSTRIAL PUBLISHING CO.,LTD	WA062	KOIKE SANSO KOGYO CO., LTD.	E2014	Metrol Co., Ltd.	E7011
Broadleaf Co., Ltd.	E5013	EMUGE-FRANKEN KABUSHIKIKAISHA	W1065	HAKUSANKIKO Co.,Ltd.	E5023	Japan Laser Corporation	E7133	Komatsu NTC Ltd.	E5005	Metrotec Corporation	E7080
BROTHER INDUSTRIES,LTD	E6033	ENGIS JAPAN CORPORATION	W4058	HAMAI.co.,LTD.	E2030	Japan Speed Shore Co,LTD	E4018	KOMET GROUP KK	W1037	MICRO-FIX JAPAN. CO.,LTD.	E7079
BUNRI Inc.	W3060	ENSHU Limited	E6012	HANEDA & Co.,Ltd	E1002	JAPAN WOLFRAM CO.,LTD.	W1002	Komori Safety Device Laboratory Company Limited	E1059	Micron Machinery Co., Ltd	E1012
Bystronic Japan, Ltd	E1072	E-PLAN CO.,LTD.	E1084	HANSUNG GT Co.,Ltd	WA033	JATCO Tool	W3066	KOSHUHA PRECISION Co.,Ltd	W1066	Midori Anzen Air Quality co.,Ltd.	E7144
C&G SYSTEMS INC.	E5011	EROWA NIPPON LTD.	E7065	HARTING K.K.	E7065	JBM Corporation	E3002	Kondoh Seisakusho co.,ltd	E1043	Miki Pulley Co., Ltd	W2001
C.I.TAKIRON Corporation	E7038	EUCHNER CO.,LTD.	E7062	HASEGAWA MACHINE WORKS LTD	E1037	Jea Sheng Industry Co., Ltd	WA046	KONITECH INC.	WA054	MINITOR CO.,LTD	WA012
CADMAC CO., LTD	E1067	Euro Techno Inc.	E3003/E7026	Hashimoto Cloth Co., Ltd.	E7142	JEOL Ltd.	E4006	Kosaka Laboratory Ltd.	E7088	MINORI INDUSTRY CO.,LTD.	E7046
CAMTUS_INC.	E5014	EUROTEC LTD.	E1064	HASHIMOTO TECHNICAL INDUSTRY CO.,LTD.	E7092	JETON R/D & MFG. INC	W3097	KOSUHATA PRECISION Co.,Ltd	W1066	MIROKU Machine Tool, INC.	E5047
Captain Industries, Inc.	E2027	EVERISING MACHINE CO.	W4065	HAWE Japan Ltd.	W4065	JFLO MACHINE TOOL ACCESSORIES CO LTD	WA001	KOSMEK LTD.	W2065	MITAKA KOHKI CO., LTD.	E7083
Carl Zeiss	E7053	EXACT MACHINERY CO.,LTD	W3055	Hebei Huayuan Machine Tool Accessories Co., Ltd.	W3031	Jia Cheng Electric Co., LTD	WA052	KOUKEN	WA036	Mitsubishi Corporation Technos	E1068
Carmex Precision Tools Ltd.	W3021	extream corporation	E5040	Hebei Ruiiao Machine Tool Accessories Producing Co., Ltd.	WA040	JIANGSU SWIFT MACHINERY TECHNOLOGY CO LTD	W2034	KOUWAKOUGYO CO.,LTD	E7145	MITSUBISHI ELECTRIC CORPORATION	E6011
CerneCon K.K.	W1017	Eyan Machine Tools Co., Ltd.	E3041	HEIAN CORPORATION	E4011	JINAN BODOR CNC MACHINE CO.,LTD.	E4003	KOWA EMTECH CO.,LTD.	W3068	MITSUBISHI HEAVY INDUSTRIES MACHINE TOOL CO.,LTD.	E2031
CENTRAL JAPAN PARTS PROCESSING ASSOCIATION	W4093	F.P.TOOLS CO.,LTD	E7128	HEIDENHAIN K.K.	E7128	JINAN SHANNENG TRADING CO.,LTD	W3057	KOYO GIKEN INC.	E1070	Mitsubishi Hitachi Tool Engineering, Ltd.	W1029
CERATIZIT Japan Co.,Ltd.	W1064	FACT co.,ltd.	E5021	HEIWA TECHNICA CO.,LTD.	E1042	JINAN TMMT STONE CO.,LTD	E3048	KOYO MACHINE INDUSTRIES CO., LTD.	W2045	MITSUBISHI MATERIALS CORPORATION	W1048
CGK CORPORATION	E1022	FANUC CORPORATION	E4015	HellermannTyton Co., Ltd.	E7056	JINAN XINLEI PRECISION MACHINERY CO LTD	WA056	KOYO MACHINE INDUSTRIES CO.,LTD.	E3014	MITSUBOSHI KOGYO CO., LTD.	W4095
CGTech Inc.	E5010	FARO Japan, Inc.	E7021	HENAN HOLD DIAMOND TECHNOLOGY CO.,LTD	WA016	JINN FA MACHINE INDUSTRIAL CO LTD	E1010	KRACHT	W3005	MITSUHATA MACHINERY CO.,LTD	E4014
Changchun Rongde Optics Co., Ltd.	W3054	FINETEC CO.,LTD.	W3008	HENAN LILIANG DIAMOND CO LTD	W4005	JIYGO REFRACTORY & ABRASIVE LTD	W3028	KREUZ CO.,LTD.	E5044	MITSUI GRINDING WHEEL CO.,LTD.	W4040
CHEMIC Co.,Ltd.	E1005	FIRST GIKEN CO.,LTD.	E5045	Henan Yuxing Sino Crystal Micro Diamond Co., Ltd.	WA025	JMACS Japan Co.,Ltd.	E7054	Kunimori Kagaku Co.,Ltd.	W4082	Mitsui High-tec, Inc.	E6019
CHIN HUNG MACHINERY CO.,LTD.	E2023	FIRSTEC CORPORATION	W3061	Hexagon Manufacturing Intelligence	E7126	JOHOKU CHEMICAL CO.DLTD	E3045	KURAKI CO.,LTD	E6013	MITSUI KOKUIN	WA019
CHIYODATSUSHOCO.,LTD.	W4074	Fladder Danmark A/S	E1015	HG TECHNOLOGY CO., LTD.	W3051	JTEKT CORPORATION	E3013/W2044	KURE GRINDING WHEEL CO., LTD	W4035	MITSUI SEIKI KOGYO CO.,LTD.	E3015
CHN-TOP SCI&TECH CO., LTD.	W3016	Flow Japan Corporation	E6002	HiMACK CO., LTD.	WA003	JUNG YUAN ENTERPRISE CO., LTD	W4078	KURODA PRECISION INDUSTRIES LTD.	E2026	Mitutoyo Corporation	E7119
CHOUKOKU IDEA CO.,LTD.	E7100	FNS Co.,Ltd.	E6029	HIRAOKA HYPER TOOLS,INC	E7097	JXTG NipponOilEnergy Corporetion	E1006	KYOCERA Corporation	W1041	Miyakawa industry.co.ltd	WA045
Chukuma Shouji Trade Corporation	E6016	Fongei Industry CO., LTD.	W3083	HIROSE VALVE INDUSTRY CO.,LTD.	W4064	K.K.3A-SANGYO	E1026	Kyoni co.,ltd	W1077	MIZUHO Co.,Ltd.	W4030
CHUKYO CO.,LTD.	W1032	FREEBEAR CORPORATION	W4084	Hirox.Co.Ltd	E7132	K.MECS CO.,LTD.	W4090	KYORITSU GOKIN CO.,LTD.	W1033	ModuleWorks GmbH	E5022
CHUO PRECISION INDUSTRIAL CO.,LTD.	E7082	FSK INC.	W4028	Hishiko Corporation	W3058	KABUTO.MFG.CO.,LTD	W2039				

# Exhibitors list

企業名	小間番号	企業名	小間番号	企業名	小間番号	企業名	小間番号	企業名	小間番号	企業名	小間番号
MONODUKURI REVIEW CO.,LTD.	WA060	NS TOOL CO.,LTD.	W1052	SAKURAI LTD.	E4012	STO CO.,LTD.	WA038	TOKYO SEIKI KOSAKUSHO CO.,LTD.	E7032	YIH TROUN ENTERPRISE CO., LTD	W3042
Motoyuki Co.,Ltd	W3002	NSK Ltd	W2027	SAN-AI ECOSYSTEM CO.,LTD	E1046	SUGANUMA TOISHI SEISAKUSHO CO.,LTD	W4048	TOKYO SEIMITSU CO., LTD.	E7032	YKT CORPORATION	E2004/E7031
MST Corporation	W2037	NT TOOL CORPORATION	W2006	Sanalloy Industry Co.,Ltd.	W1069	SUGATSUNE KOGYO CO.,LTD	E1078	TOKYO SEIMITSU HATSUJO CO.,LTD.	E1074	Yodogawa Electric Tool MFG.,	W3056
MURAKI LTD.	W1063	NTN Corporation	W2051	SANDVIK K.K.	W1045	SUGINO MACHINE LIMITED	E4029	TOKYO TAPPING MACHINE CO.,LTD.	E1075	YONEZAWA KOKI CO.,LTD.	E5053
MURATA MACHINERY,LTD.	E3032	NUNOME ELECTRIC CO.,LTD	E7077	Sangen Corporation	E1073	Sumflex Co.,Ltd.	W1007	TOKYO TECHNICAL INSTRUMENTS INC.	W4075	YOSHIKAWA IRON WORKS CO., LTD.	E1057
MY TOOL NAGANO CO., LTD.	WA051	OBISHI KEIKI SEISAKUSHO Co.,LTD	E7020	SANKEI MANUFACTURING CO.,LTD.	E7063	SUMITOMO ELECTRIC INDUSTRIES, LTD.	E3021	TOMITA CO.,LTD.	W2040	YOSHIKAWA MAPLE Co.Ltd	E5026
NABELL CORPORATION	W2069	Oerlikon Nihon Balzers Coating Co., Ltd.	W1022	SANKI TECHNOS CO.LTD	WA007	Sumitomo Heavy Industries Finetch,Ltd.	W4080	TOOL de INTERNATIONAL Co., LTD.	W1076	YUAN JUN FONG CASTING CO.,LTD.	W3027
Nabeya Co.,Ltd.	W2022	OGASAWARA PRECISION LABORATORY LTD.	W1073	SANKYO SEISAKUSHO CO.	W2033	sumitomo precision product co.,Ltd	WA002	TOSHIBA MACHINE CO.,LTD	E3031	Yuan Yi Chang (YYC) Machinery Co., Ltd.	W3064
NACHI-FUJIKOSHI CORP.	E5008/W1047	OGURA CLUTCH CO.,LTD.	W2018	SANSHIN CO.,LTD.	E1049	SUN YUAN TECHNOLOGY CO., LTD.	W3078	TOWA CORPORATION	WA041	Yuken Kogyo Co., Ltd.	W4069
NAGAHARA SEISAKUSHO LTD.	E7027	OHM ELECTRIC CO., LTD.	W2053	Sanwa Robotics Co.,Ltd.	W3073	SunUs Tech Co., Ltd.	E1069	Toyo Advanced Technologies Co.,Ltd.	E6018	YUKI LABORATORY CO.,LTD.	E7016
NAGASE INTEGREG Co.,Ltd.	E1077	OHMINE INDUSTRY CO., LTD.	E1056	SANWA SEISAKUSHO CO.,LTD	W1072	SUN-YELL INTERNATIONAL CORPORATION	WA053	TOYO Co.,Ltd	W1057	YUKIWA SEIKO INC.	W2028
NAGASHIMA SEIKO CO.,LTD	E6025	OHMIYA MACHINERY CO.,LTD	E3024	SANWA SHOKO CO., LTD.	E1016	Suzhou Huajiede Manufacturing Co., Ltd.	E7036	TOYO CORPORATION	E1080	YUKO CORPORATION	W4008
NAGELDAOBA PRECISION CO., LTD.	E1052	OHTORI KIKO CO.,LTD.	E6020	sanwakouyuu	E1024	Suzhou Yongtian Equipment Co., Ltd.	E6009	TOYO KENMAZAI KOGYO LTD.	E1007	YUSHIRO CHEMICAL INDUSTRY CO.,LTD.	E1017
NAKA SEIKI CO.,LTD	E7074	Oikawa Hamono kogyo Ltd.	W1058	SANYO MACHINE CO.,LTD.	E3008	SWISS TECHNOLOGY CO LTD.	E6028	TOYO MACHINE MFG.CO.,LTD.	E1050	YUTANI Co.,Ltd.	E1063
NAKAHARA CHEMICAL PRODUSTRY CO.LTD	W2059	OJIYA SEIKI CO.,LTD	E7123	SANYO MFG.CO.,LTD.	W2007	SYNOVA JAPAN KK	E7029	TOYO SCREEN KOGYO CO.,LTD.	W3053	ZHEJIANG UTE BEARING CO LTD	WA050
NAKAMURA MFG. CO., LTD.	E7125	OKAMOTO MACHINE TOOL WORKS,LTD	E4016	SANYO TOOL MFG.Co.,Ltd.	W1042	TACC Corporation	W4026	TOYO SEIKI KOGYO CO.,LTD	E4005	Zhejiang Yongxing Drill Manufacturing Co, Ltd	E3051
Nakamura-Tome Precision Industry Co.,LTD.	E2025	OKASUGI CO.LTD.	W4033	Sato Special Oil Co., Ltd.	E1025	TACS CORPORATION	E5027	TOYODA VAN MOPPEES LTD.	W4013	Zhengzhou Best Synthetic Diamond Co.,Ltd	W4009
NAKANIHON-RO KOGYO CO.,LTD.	E1021	OKAZAKI SEIKO CO.,LTD.	W1023	Sawairi Engineering Co.,Ltd.	E4022	TACTX Co.,Ltd.	W1012	Transor Filter Japan K.K.	E3005	ZHENGZHOU DIAMOND PRECISION MANUFACTURING CO LTD	W3065
NAKANISHI INC.	W2067	OKK CORPORATION	E4027	Schmersal Japan K.K.	E7107	TAEGUTEK JAPAN LTD.	W3094	Trio Engineering Co. Ltd.	W2003	ZHENGZHOU HONGJI ABRASIVE TECH CO LTD	W3018
Nango Co.,Ltd.	E7105	OKUMA Corporation	E6037	SCHUNK Intec K.K.	E2010	TAI CHONG COMPANY, LTD	WA059	Trioptics Japan Co.,Ltd.	E7006	Zhuzhou Cemented Carbide Group Co., Ltd.	W3020
NBK	W2042	Olympus Corporation	E7087	SeaForce CO	E4002	taigashuppan	W4056	TRIPL R CO.,LTD.	W4054	ZOLLER Japan KK	E1061
NEOS COMPANY LIMITED	E1004	O-M LTD.	E4030	SEAL TECH INC.	W4051	TAISEI KOGYO Co.,Ltd.	E4004/W4097	TRUMPF Coporation	E1035	ZZDM Superabrasives Co.,Ltd.	W4011
NEW SANKYO TOOL CO.,LTD.	W3004	OPEN MIND Technologies Japan K.K.	E5015	Seibu Electric □ Machinery Co.,Ltd.	E2015	TAIWAN EXTERNAL TRADE DEVELOPMENT COUNCIL(TAITRA)	E3027	TSUBAKI NAKASHIMA CO.,LTD.	E3027		
NEW STRONG CO.,LTD.	W3035	Optical Comb,inc.	E7116	Seiko Instruments Inc.	E1009	TAIYO KOKI CO., LTD.	E7108	TSUBAKIMOTO CHAIN CO.	W2009		
NEWREGISTON Co.,Ltd.	W4021	OPTON	E1071	SEIWA CORPORATION	E4019	TAIYO KOUKI CO.,LTD	W1055	TSUDAKOMA Corp.	W2036		
News Digest Publishing Co., Ltd.	WA057	ORiN conference	E5002	SEJINBITE	W3038	TAIYO-TOOL CO.,LTD.	E6031	TSUGAMI CORPORATION	E6010		
NGK SPARK PLUG CO.,LTD.	W1001	ORION TOOL CO.,LTD	W3048	SELICA INTERNATIONAL CO.,LTD.	E3044	TAIYU CO.,LTD	E4009	TSUNE SEIKI Co., Ltd.	E2020		
NIHON PISCO CO.,LTD.	W4050	Osaka Seikan Co.,Ltd.	E7059	SENJO SEIKI CO.,LTD	E1029	Taizhou Beiping Machine Tool Co.,Ltd	E4007	Tungaloy Corporation	W1028		
NIHON SEIKI CO., LTD.	E6021	Osaka Seimitsu Kikai Co., Ltd.	W4091	SENSHU ELECTRIC CO.,LTD	W3045	TAIZHOU MEIRI NEW ENERGY CO LTD	E7109	UJIN TECH. CORP	E7066		
NIHON SEIMITSU KIKAI KOSAKU Co.,Ltd.	WA017	OSG Corporation	W1035	SEOAM MACHINERY IND. CO., LTD.	W3098	Tajima Light Metal Co.,Ltd	E1051	UNI MAGNETIC INDUSTRIAL CO.,LTD	W4094		
Nihon Tsukuridasu .inc	E7071	OTSUKA ELECTRONICS CO.,LTD.	E7004	Shandong Nano Advanced Materials Technology Co., Ltd.	E7039	TAKAHASHI MACHINERY CO.,LTD.	WA021	UNION MATERIALS CORP	W3010		
Nihon-ALSYS,Inc	E5006	OTSUKA OPTICS CO.,LTD.	E7117	Shanghai FE-MOVAC Precision Machine Ltd.	E2029	Takahashi Tools Co., Ltd.	WA044	UNION TOOL CO.	W1014		
NIHONSEIKI CO.,LTD.	W4053	OZAKI MFG. CO.,LTD	E7023	Shanghai YuHer Diamond Tool, Co. Ltd.	W4010	TAKAHIRO ENGINEERING WORKS LTD.	E5019	Unipulse Corporation	E7012		
NIIGATA MACHINE TECHNO CO.,LTD.	E4017	P & C LTD.	E7134	SHIBUYA CORPORATION	E1060	TAKAMATSU MACHINERY CO.,LTD.	E1032	United Grinding Group	E1079		
Niigata riken sokuhan co., ltd.	E7017	PAL CO.,LTD.	WA032	SHIGIYA MACHINERY WORKS LTD.	E2016	Takahashima Sangyo Co.,Ltd.	WA055	UNITEK JAPAN K.K.	W4062		
Niigata seiki Co.,Ltd.	E7127	Panduit Corp.	WA002	SHIMADA MACHINERY Co., LTD	E3018	TAKAYAMA TRADING COMPANY LIMITED	E3033	UNOMIC	E7073		
Nikka Seiko Co., Ltd.	E7106	PARAGON MACHINERY CO., LTD	E6032	Shimadzu Industrial Systems Co., Ltd	W4092	TAKEDA MACHINE TOOLS CO., LTD.	W2038	UTSUNOMIYA SEISAKUSHO CO.,LTD.	W1053		
Nikkei Business Publications,Inc.	WA061	PARKSON WU INDUSTRIAL CO., LTD.	W3047	Shimizu Densetsu Kogyo Co.,Ltd.	W1020	TAKEUCHI PRECISION WORKS CO.,LTD.	E5017	VARGUS LTD.	W3030		
NIKKEN KOSAKUSHO WORKS,LTD.	W2021	Pascal Corporation	W2023	SHIN NIPPON KOKI CO.,LTD.	E4029	Takisawa Machine Tool Co., Ltd.	WA013	Vector Co., Ltd.	E7042		
NIKKI,TRADING.CO	E7058	PATLITE Corporation	E7055	SHINANO KIHAN Co.,LTD	W4019	takura kougu seisakusyo	W2070	VECTRIX CORPORATION	E7124		
NIKON INSTECH CO., LTD.	E7009	PB Swiss Tools	W3036	SHINKO MFG.CO.,LTD	E1041	Tan Jia Precision Technology Co., Ltd	W3044	VEKTEK LLC	W2012		
Nikuni Co., Ltd.	W2005	PERFECT MACHINE CO., LTD	E1018	ShinMaywa Industries, Ltd.	W1018	TANITEC CORPORATION	W1051	Vero Software KK	E5003		
NILES MACHINE CO.,LTD.	E1033	PHOTRON LIMITED	E7090	SHIN-OH ELECTRIC CO.,LTD.	W3088	TANOI MFG.CO.,LTD.	WA022	VERTEX MACHINERY WORKS CO., LTD.	W3085		
NIPPON BEARING CO.,LTD.	W2015	Pioneer Machine Tools, inc.	W2004	SHINSEI CORPORATION	W1043	TATENO CO., LTD.	WA029	Visiport	W3074		
NIPPON CHOKO CO.LTD	W1067	Polytec Japan	E7081	SHIZUOKA MACHINE TOOL CO.,LTD	E3036	TATSUNO SEWING DOCTOR COMPANY	W3024	VOLLMER JAPAN CORP.	E2002		
NIPPON DIAMOND Co.,LTD	WA001	PRECISION TOOL MAKERS EXPORT GROUP, LTD.	WA023	SHODA	E1013	TDC Precision Tools Inc.	E5033	Volume Graphics Co., Ltd.	E7030		
NIPPON JABARA CO.,LTD	W2047	PRIORITY CO.,LTD	E3026	Shoh-Koh co.,ltd.	W4003	Tebis AG	W2057	WAGO COMPANY OF JAPAN, LTD.	E7061		
Nippon Mecha-Chemical Co.,Ltd	E7140	PULSTEC INDUSTRIAL CO.,LTD.	E7076	shoukokeizai shimibun	WA065	TECH WAY ADVANCED MATERIALS CO LTD	W3081	WAIDA MFG. CO., LTD.	E3037		
NIPPON OIL PUMP CO.,LTD	W2029	READ Co.,Ltd	WA006	SHOWA CORPORATION	W4077	TechQYASUDA Co.,Ltd	W4088	Walrus Pump. CO., LTD.	W4044		
Nippon Schneeburger K.K.	W2017	REGG INSPECTION S.r.l.	E6030	SHOWA DENKI CO., LTD.	W2025	Techno Dynamics Inc.	W3090	Walter Japan K.K.	W1054		
NIPPON THOMPSON CO., LTD.	W2030	REIHO.CO.LTD	WA014	SHOWA PRECISION INDUSTRIES CO.,LTD.	W2056	Techno Nakanishi Co. Ltd.	E5037	Watanabe Seimitsu industries, LTD	E7130		
NIPPON TOKUSHU GOUKIN CO.,LTD.	W1061	Reishauer KK	E2003	SHOWASEIKI	W2031	TECHNOA Inc.	E3043	WFL Millturn Technologies GmbH & Co. KG	E6023		
NIPPON VISION ENGINEERING CO. LTD.	E7078	Renishaw KK	E7139	SHUOS YI CO., LTD.	W4046	TechnoCoat Co., Ltd.	E5054	WIDIN Co., LTD.	WA037		
Nishijima Corporation	E2006	RESITON Co., Ltd.	W4027	SIEMENS K.K.	E5007	Technology Research Association of Future Additive Manufacturing	E7001	WIKUS-SÄgenfabrik Wilhelm H. Kullmann GmbH & Co. KG	W3017		
NISSEI HOMMA MACHINERY CO.,LTD.	E1081	RESMOTOOL CO.,LTD.	W3033	sigma electronics co.,Ltd.	E7010	TECLOCK Corporation	W4016	WINTECH AUTOMATION CO., LTD	W4023		
NISSHIN RUBBER CO.,LTD	E7034	RF Co., Ltd.	E7141	Silver Alloy Co.,Ltd.	W3009	TEIKEN	W2046	World Chemical	E7064		
NISSHO MACHINERY CO.,LTD	E3007	R-GOT CO.,LTD	E1018	SISA ABRASIVES CO LTD	W4034	TEIKOKU CHUCK Co.,Ltd.	W4004	worldtool.co.,LTD	W3026		
NISSIN MACHINE WORKS,LTD.	E3001	Rhinos Company Ltd.	W1074	SKF Japan Ltd.	W3100	Tenryu Saw Mfg. Co., Ltd.	E5041	XEBEC TECHNOLOGY CO.,LTD.	WA009		
NISSIN MANUFACTURING CO., LTD.	E1038	RIKEN SEIKI Co.,Ltd.	W2050	Slab Corp.	E3050	TERAL INC.	W3015	Xiamen Golden Egret Special Alloy Co.,Ltd	W3059		
NISSIN SEIKI Co. Ltd.	E7037	Rittal K.K.	E2022	SMW-AUTOBLOK JAPAN INC.	W2035	TE-SHIN CAM CO.,LTD.	W3037	Xiamen Toonney Alloy Co., Ltd	W3007		
Nitolex Corporation	W4031	RIX CORPORATION	W3029	Sodick Co.,Ltd.	E5004	THE KIICHI TOOLS CO., LTD.	WA058	Xi'an DongLong Precision Toolings Co.Ltd	W4081		
Nitta Corporation	W4038	RMF Japan Co., Ltd.	E4045	Sofix Co.Ltd.	E4020	THE NIKKAN KOGYO SHIMBUN,LTD.	E1027	YACHIYO CORPORATION	W3079		
NITTO KOGYO	E7143	Roeders GmbH	E3040	SOKUHANSHA CO.,Ltd	E7120	Thermal Co.,Ltd.	W2020	YAGER GEAR ENTERPRISE CO., LTD.	W4068		
Nitto Kohki Co., Ltd.	W4057	ROEHM GmbH	W3052	SOL Corporation	E7007	THK CO.,LTD.	E7110	YAMADA MACHINE TOOL Co.,Ltd	W2010		
NITTO POLYGON Co., Ltd	E6024	Roemheld Halder Co.,Ltd.	WA042	SOLTON CO.,LTD.	W3050	Tianhe (Baotou) Advanced Tech Magnet Co., Ltd.	W4047	YAMAGUCHI SANGYO CO., LTD.	E7014		
Nitto shoji kaisha,Ltd	E3006	Roku-Roku Sangyo, Ltd	E3019	SOMAX CO.,LTD.	E1011	Tipton Corp.	WA026	Yamamoto Scientific Tool Laboratory Co., Ltd.	E7028		
NK-works co.,ltd.	E2009	ROSS ASIA K.K.	E1083	SOSHIN ELECTRIC CO.,LTD.	E7102	TnC SHARK CO., LTD	WA008	YAMASAKI GIKEN CO., LTD.	E5020		
NOAH CORPORATION	W1071	RYOCO SEIKI CO.LTD	W1036	SOWA Co.,Ltd.	W4025	TODASEIKI	E1036	YAMAWA MFG.CO.,Ltd.	W1026		
Nobby Tech. Ltd.	E7069	Ryokosha Co., Ltd.	E7084	Spatial	E7068	TOHSHIN TECHNICAL CO.,LTD.	W1075	YAMAZAK MAZAK CORPORATION	E5001		
NOGA WATERS LTD.	W1025	S&F Inc.	E3017	SPEED TIGER PRECISION TECHNOLOGY CO., LTD	W3013	TOKO CO., LTD.	W3022	YANASE CO.LTD	W4032		
NOMURA DS CO., LTD	E2024	SAEIL O ASIANET,INC.	E3042	Speedy Target Group, Ltd.	E1023	TOKYO AUTOMACH CO.,LTD.	E7022	YANGZHOU DEVELOPPING IMP&EXP CO LTD	E4008		
NOMURA MACHINE TOOL WORKS, LTD	W2041	SAEIL O JAPAN, INC.	E4025	SPI ENGINEERING CO.,LTD	E7091	TOKYO BOEKI TECHNO-SYSTEM, LTD.	E7099	YANO METALS CO.,LTD.	W1011		
NORITAKE CO.,LIMITED	W4020	SAIDAJUMS CO.,LTD.	E3020	Star Micronics Co., Ltd.	E6014	TOKYO BRAZE Co.,Ltd.	E7045	Yantai Xin Chao Casting Co., Ltd.	E7035		
NOTOALLOY Co.,Ltd.	W1030	Saint Gobain K.K.	W4014	steute Schaltgeraete GmbH & Co. KG	W4067	Tokyo Chokoku Marking Products Co.,Ltd	E3049	YASDA PRECISION TOOLS K.K.	E3030		
Novanta Japan Corporation	WA004	Saito Seisakusho Co., Ltd.	W1009	ST-Link Co.,LTD	E1065	TOKYO ENGINEERING CO.,LTD	E2001	YG-1 JAPAN CO.,LTD.	WA034		





■ JIMTOF2018 Guide map

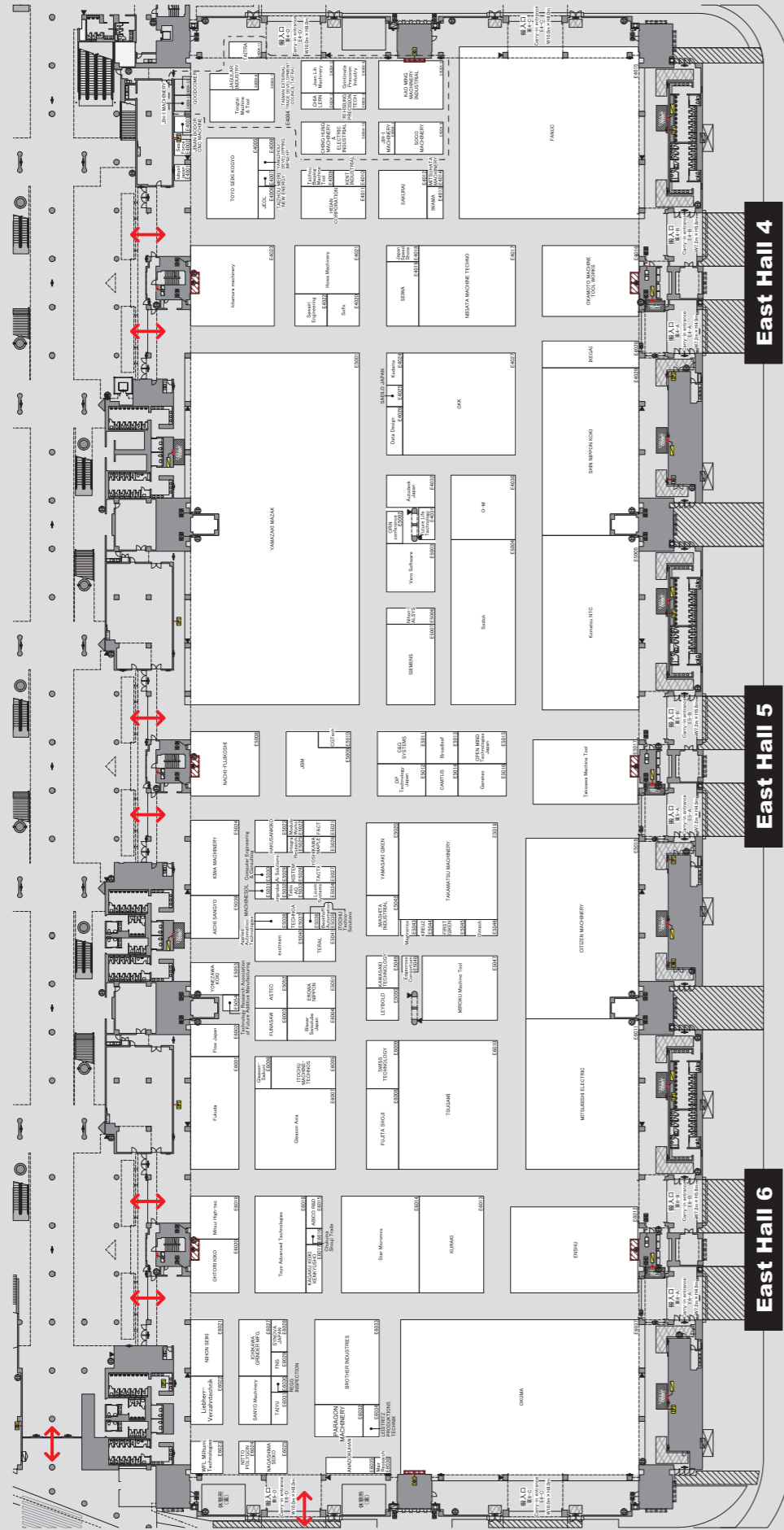


Table of Disaster Prevention Equipment

- Emergency Exit Sign Lighting
- Automatic Fire Alarm
- Indoor Fire Hydrant
- Smoke Exhaustion Switch
- Fire Extinguisher
- Fire Hydrant for Fire Crew only

East Hall 4

East Hall 5

East Hall 6

East Hall

■ JIMTOF2018 Guide map

East Hall

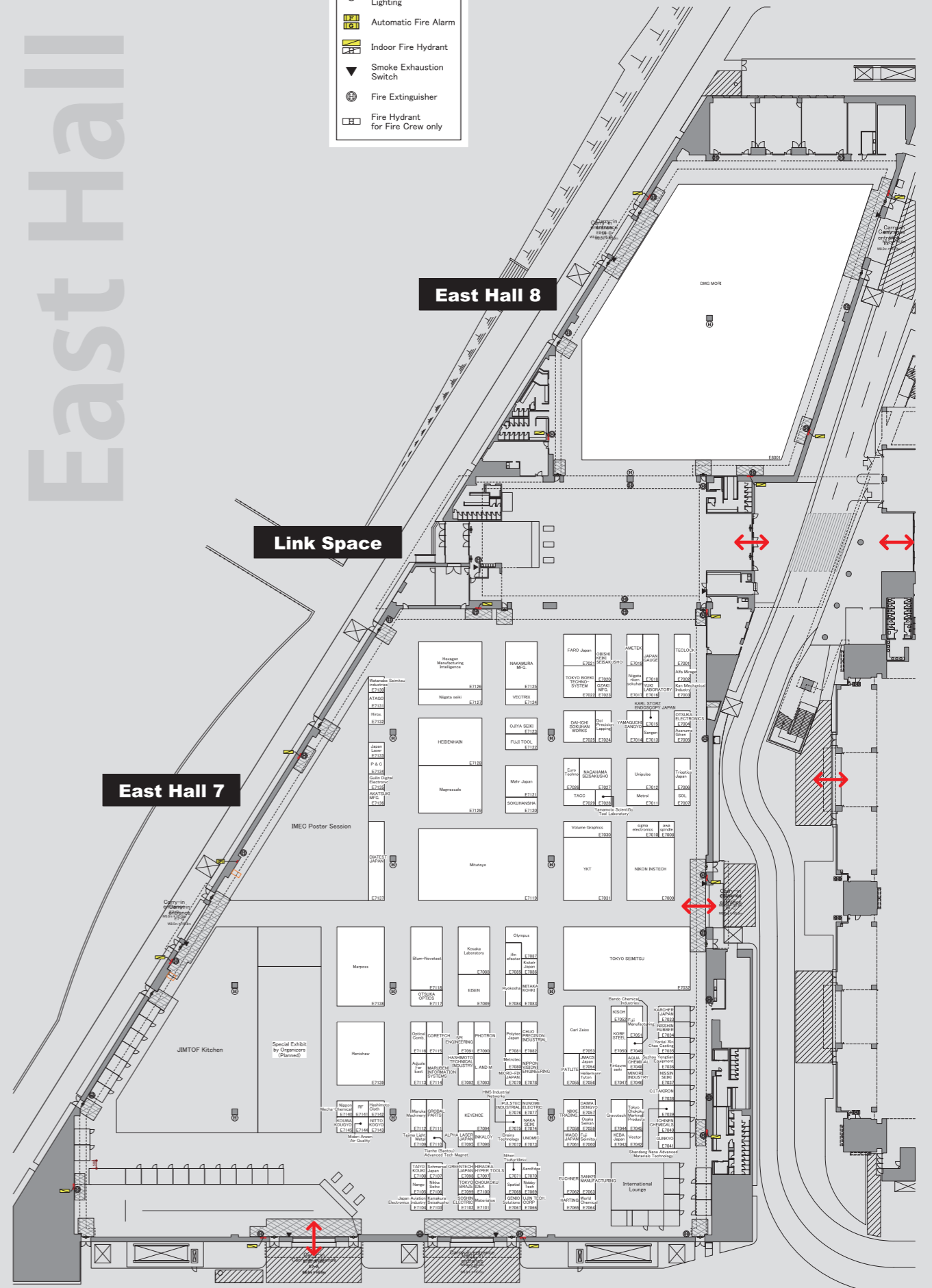


Table of Disaster Prevention Equipment

- Emergency Exit Sign Lighting
- Automatic Fire Alarm
- Indoor Fire Hydrant
- Smoke Exhaustion Switch
- Fire Extinguisher
- Fire Hydrant for Fire Crew only

East Hall 8

Link Space

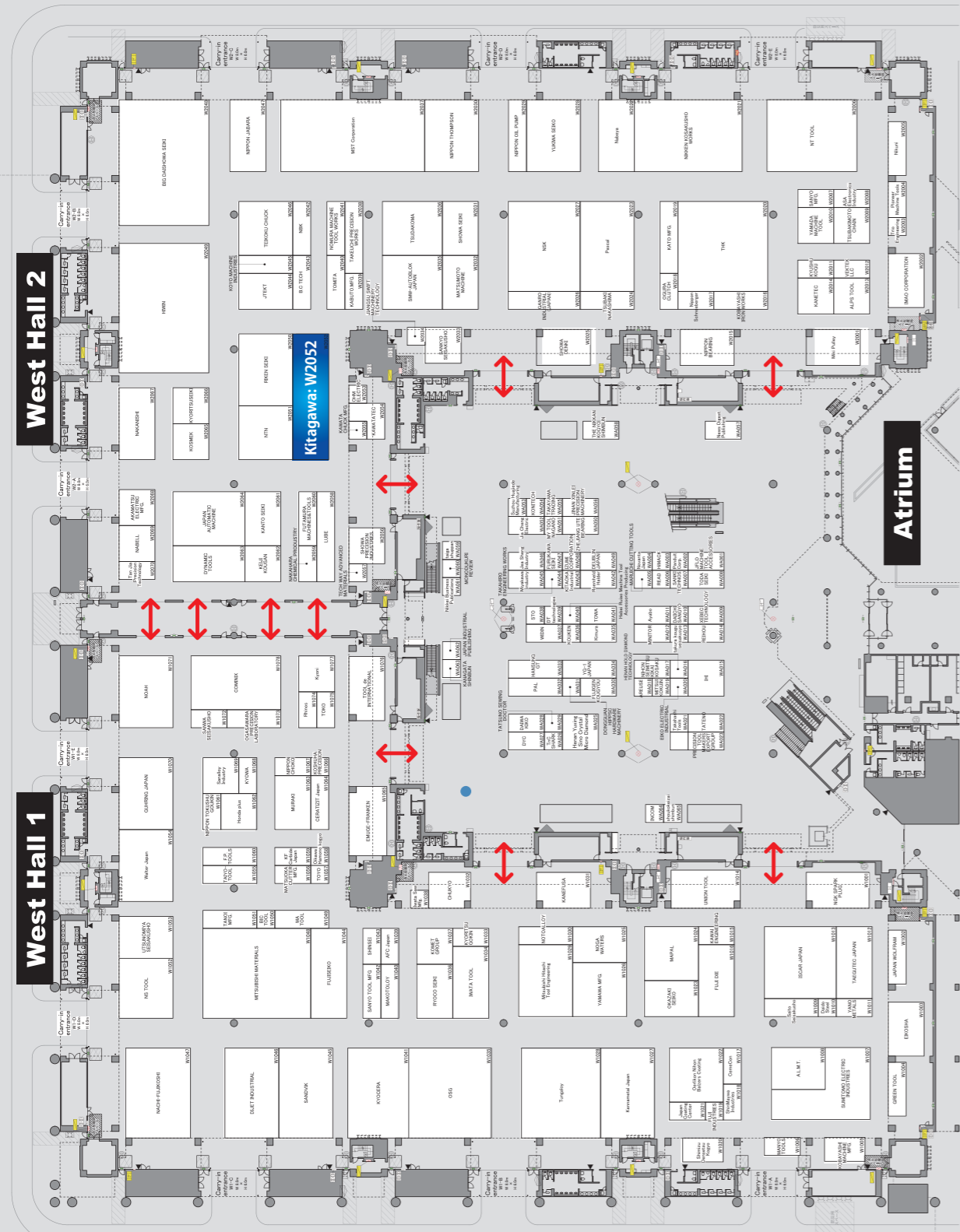
East Hall 7

# West Hall

**Kitagawa Corporation Booth: W2052 in West Hall 2**

Table of Disaster Prevention Equipment

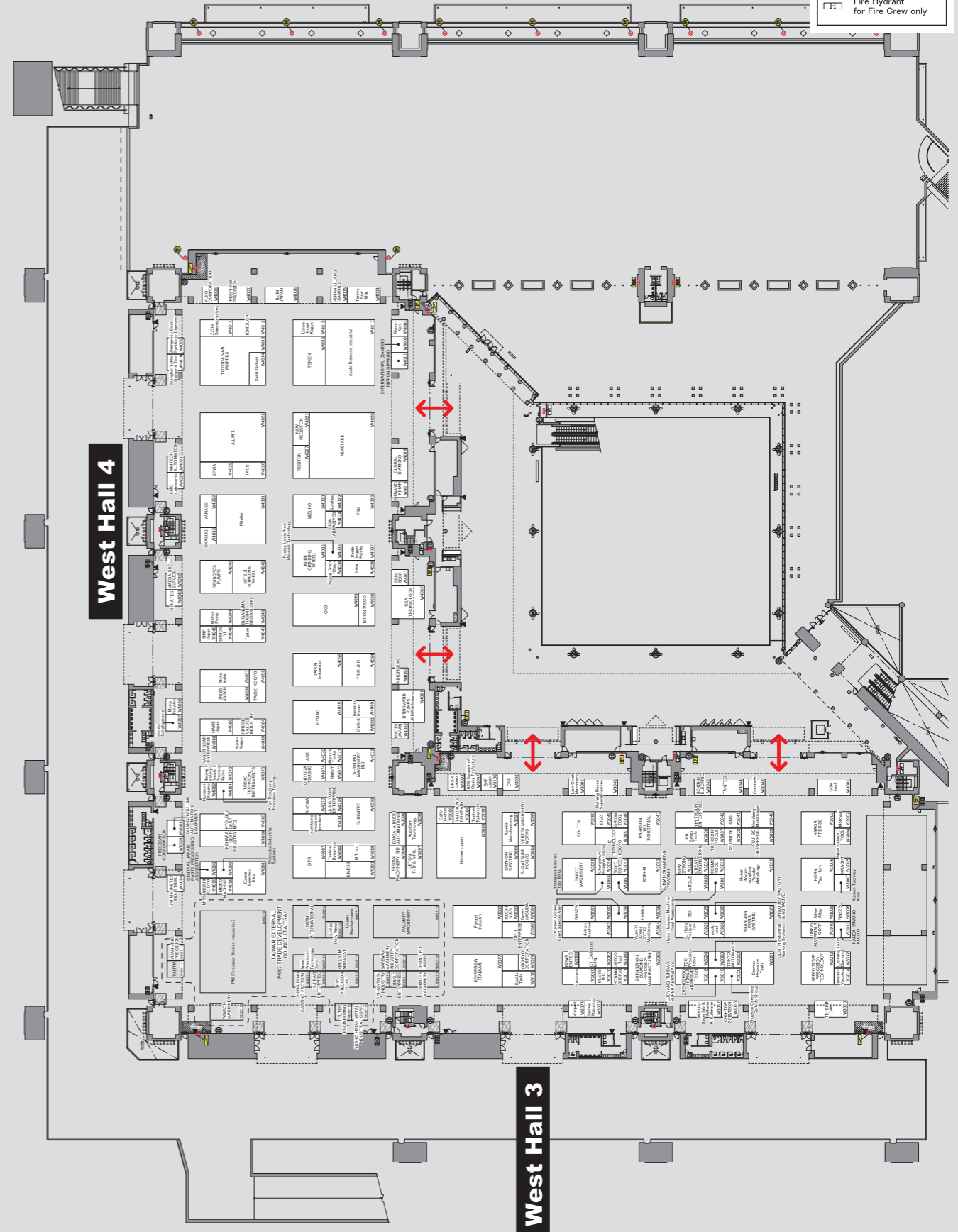
- Emergency Exit Sign Lighting
- Automatic Fire Alarm
- Indoor Fire Hydrant
- Smoke Exhaustion Switch
- Fire Extinguisher
- Fire Hydrant for Fire Crew only



# West Hall

Table of Disaster Prevention Equipment

- Emergency Exit Sign Lighting
- Automatic Fire Alarm
- Indoor Fire Hydrant
- Smoke Exhaustion Switch
- Fire Extinguisher
- Fire Hydrant for Fire Crew only



## We promote globalization and provide trust in the future of technology.

KITAGAWA has expanded production facilities and sales offices to the United States, Europe, Thailand, China and Mexico in order to respond to the global scale economic environmental changes.

'It is not the strongest of the species that survive, but the one most responsive to change.'

This is the famous word in Biological evolution. We will further promote globalization as this phrase.



■KITAGAWA-NORTHTECH INC.



●本社・本社工場



■本社工場



■下川辺工場



■福山工場



■KITAGAWA EUROPE LTD.



■東京工場  
■東京支店



■東京事業所



■名古屋支店



■大阪支店



■和歌山工場

### Global Network

#### KITAGAWA (THAILAND) CO.,LTD.

HEMARAJ CHONBURI INDUSTRIAL ESTATE, 39 M00 8, ROAD NO. 331, BO-WIN, SRIRACHA, CHONBURI 20230 THAILAND.

Business Manufacture and sales of cast iron parts for automotive and agricultural machineries. Sales and service of the machine tool accessories in the Southeast Asia market.



■北川(瀋陽)工業機械製造有限公司

#### KITAGAWA MEXICO, S.A. DE C.V.

Parque Industrial de Logística Automotriz, Aguascalientes, México

Business Manufacture and processing of iron casting products for automotive.

■KITAGAWA MEXICO, S.A. DE C.V.



■MEXICO Factory

#### 北川(瀋陽)工業機械製造有限公司

中華人民共和國遼寧省瀋陽市經濟技術開發區14号街18号

Business Manufacture of machine tool accessories.



■上海北川鉄社貿易有限公司

#### KITAGAWA-NORTHTECH INC.

301E, COMMERCE DRIVE, SCHAUMBURG, IL60173 U.S.A

Business Sales and services of machine tool accessories in America



■KITAGAWA (THAILAND) CO.,LTD.

#### KITAGAWA EUROPE LTD.

UNIT 1,THE HEADLANDS,DOWNTON,SALISBURY,WILTSHIRE SP5 3JJ,UK

Business Sales and services of machine tool accessories in Europe

#### 上海北川鉄社貿易有限公司

中華人民共和國上海市長寧區仙露路317号遠東國際廣場B棟308室

Business Sales and services of machine tool accessories in China

### Domestic Network

#### 北川冷機株式会社

〒722-0411 広島県世羅郡世羅町宇津戸200

事業内容 (株)北川鉄工所向け工作機器部品の機械加工、自動車・建設機械・農機具部品の機械加工、販売

#### 株式会社吉舎鉄工所

〒729-4204 広島県三次市吉舎町三玉541

事業内容 鋳鉄鑄物の製造、販売

#### 株式会社北川製作所

〒726-0003 広島県府中市元町424-10

事業内容 スクロールチャックの製造・NC機械加工

### Factory

- 本 社 工 場
- 本 山 工 場
- 下 川 辺 工 場
- 福 山 工 場
- 中 須 工 場
- 甲 山 工 場
- 東 京 工 場
- 和 歌 山 工 場

### Branch office

- 仙 台 支 店
- 東 京 事 業 所
- 東 京 支 店
- 名 古 屋 支 店
- 大 阪 支 店
- 広 島 支 店
- 九 州 支 店

### Sales office

- 札 幌 営 業 所
- 新 潟 営 業 所
- 四 国 営 業 所



with HANDS, with SURPRISE !

***CUSTOMIZED***  
by  itagawa

**We respond to your needs.**

Check our website

<http://www.kiw.co.jp/>

<http://www.kitagawa.com>



Website



New products  
information



Catalogue