



**CHUCK**

# 中実ロングストロークパワーチャック Closed Centre Power Chuck (Long Stroke) NL series

## 2倍のストローク Extra Long Jaw Stroke

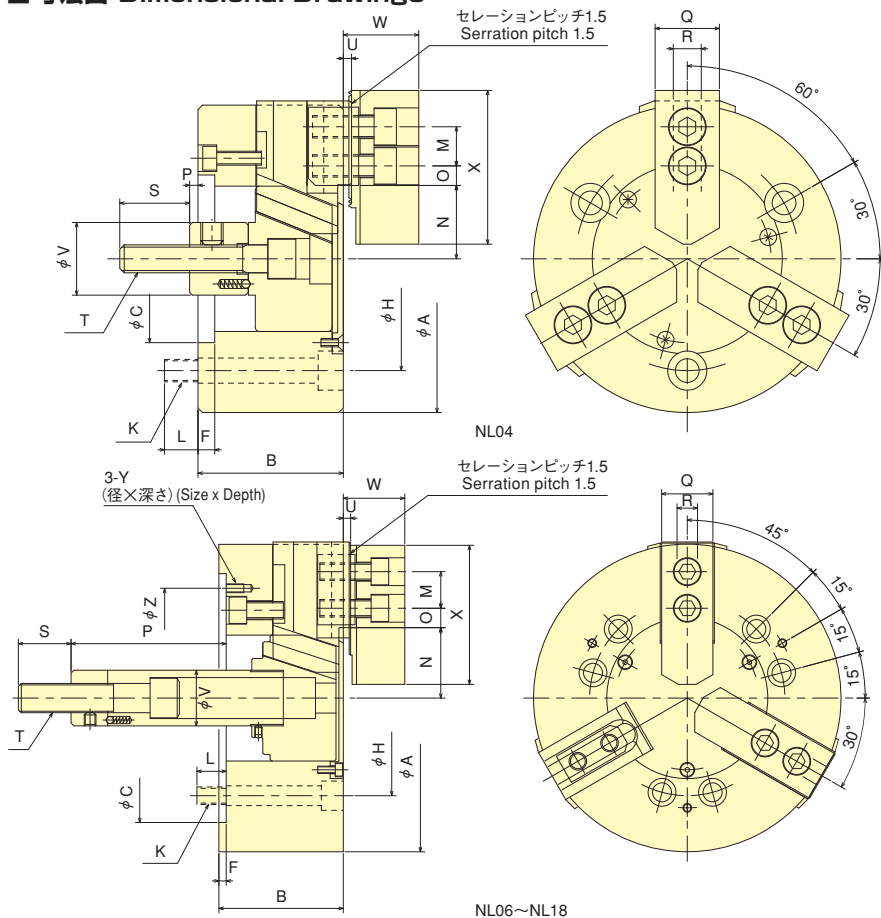
### 突起物ワークも確実把握

### Flange work-pieces securely gripped

\*CE対応品 \*CE correspondence

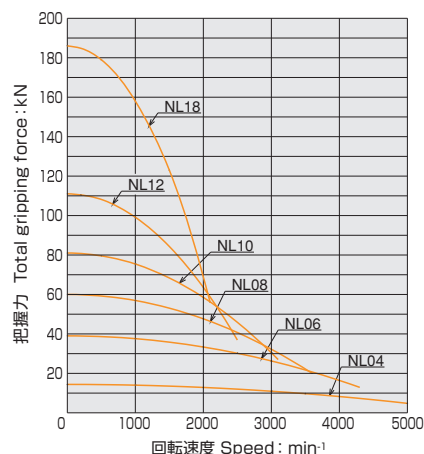


#### ■ 寸法図 Dimensional Drawings



#### 把握力性能曲線 Gripping Characteristic Graphs

※線は標準ソフトジョーを用いた場合のものです。  
※With standard blank soft top jaw.



#### ■ 寸法表 Dimensions

| 寸法<br>Model | A   | B   | C<br>(H6) | F | H     | K     | L  | M  | N<br>max. | N<br>min. | O<br>max. | O<br>min. | P<br>max. | P<br>min. | Q  | R    | S  | T   | U | V  | W  | X   | Y      | Z   |
|-------------|-----|-----|-----------|---|-------|-------|----|----|-----------|-----------|-----------|-----------|-----------|-----------|----|------|----|-----|---|----|----|-----|--------|-----|
| NL04        | 110 | 52  | 60        | 6 | 80    | 3-M 8 | 12 | 14 | 26.5      | 20.45     | 9.75      | 6.75      | 18        | 3         | 23 | 10   | 25 | M10 | 3 | 26 | 27 | 55  | -      | -   |
| NL06        | 165 | 74  | 140       | 5 | 104.8 | 6-M10 | 14 | 20 | 40.5      | 34        | 13.75     | 9.25      | 101.5     | 81.5      | 31 | 12   | 36 | M16 | 4 | 34 | 35 | 72  | M6×10  | 116 |
| NL08        | 210 | 85  | 170       | 5 | 133.4 | 6-M12 | 20 | 25 | 48.1      | 40        | 20.75     | 11.75     | 131       | 106       | 35 | 14   | 36 | M20 | 5 | 38 | 42 | 95  | M6×12  | 150 |
| NL10        | 254 | 89  | 220       | 5 | 171.4 | 6-M16 | 18 | 30 | 54.4      | 45.35     | 29.5      | 11.5      | 161       | 133       | 40 | 16   | 36 | M20 | 5 | 45 | 46 | 110 | M8×15  | 190 |
| NL12        | 304 | 106 | 220       | 6 | 171.4 | 6-M16 | 18 | 30 | 65.7      | 56        | 42.75     | 12.75     | 47        | 17        | 50 | 18   | 46 | M24 | 5 | 50 | 54 | 129 | M8×15  | 190 |
| NL18        | 450 | 114 | 300       | 6 | 235   | 6-M20 | 30 | 43 | 110.5     | 97.5      | 47.25     | 23.25     | 97        | 57        | 50 | 25.5 | 55 | M30 | 2 | 55 | 61 | 135 | M10×20 | 260 |

※NL18はシリンダが特殊となりますので、別途打合せとさせていただきます。  
※When using NL18, a special cylinder is required.

#### ■ 仕様表 Specifications

※把握径/把握範囲は標準のソフトジョーを使用した場合。※Gripping dia./gripping range is with standard soft jaws.

| 仕様<br>Model | 把握径<br>Gripping range<br>mm | ジョー<br>Jaw Stroke<br>mm | ストローク<br>Plunger Stroke<br>mm | 最大静的<br>Max. Draw Bar Pull Force<br>kN | 最大静的<br>Max. Gripping Force<br>kN | 許容最高<br>Max. Speed<br>min <sup>-1</sup> | 質量<br>Net Weight<br>kg | 慣性モーメント<br>Moment of inertia<br>kg·m <sup>2</sup> | 適合シリンダ<br>Matching Cylinder | 許容最大油圧<br>Max. pressure<br>MPa | 標準ソフトジョー<br>Matching Soft top jaw | 適合ハードジョー<br>Matching Hard top jaw |
|-------------|-----------------------------|-------------------------|-------------------------------|--|-----------------------------------|---|------------------------|---|-----------------------------|--------------------------------|-----------------------------------|-----------------------------------|
| NL04        | 110                         | 9                       | 12.1                          | 15                                     | 10                                | 5000                                    | 4.1                    | 0.008   | Y0715R/RE01C                | 2.9                            | SJ04B1                            | -                                 |
| NL06        | 165                         | 21                      | 13                            | 20                                     | 21                                | 39                                      | 4300                   | 12  | Y1020R/RE47                 | 3.0                            | SJ06B1                            | HB06B1                            |
| NL08        | 210                         | 21                      | 16.2                          | 25                                     | 30                                | 60                                      | 3600                   | 22.9  | Y1225R/RE47                 | 2.9                            | SJ08B1                            | HB08A1                            |
| NL10        | 254                         | 24                      | 18.1                          | 28                                     | 40                                | 81                                      | 3100                   | 34.6  | Y1530R/RE47                 | 2.8                            | SJ10A1                            | HB10A1                            |
| NL12        | 304                         | 29                      | 19.4                          | 30                                     | 54                                | 111                                     | 2500                   | 60  | Y1530R/RE47                 | 3.6                            | SJ12A1                            | HB12B1                            |
| NL18        | 450                         | 122                     | 26                            | 40                                     | 91                                | 186                                     | 2100                   | 124   | Y2035RE47**                 | 3.5                            | SJ15N1                            | -                                 |