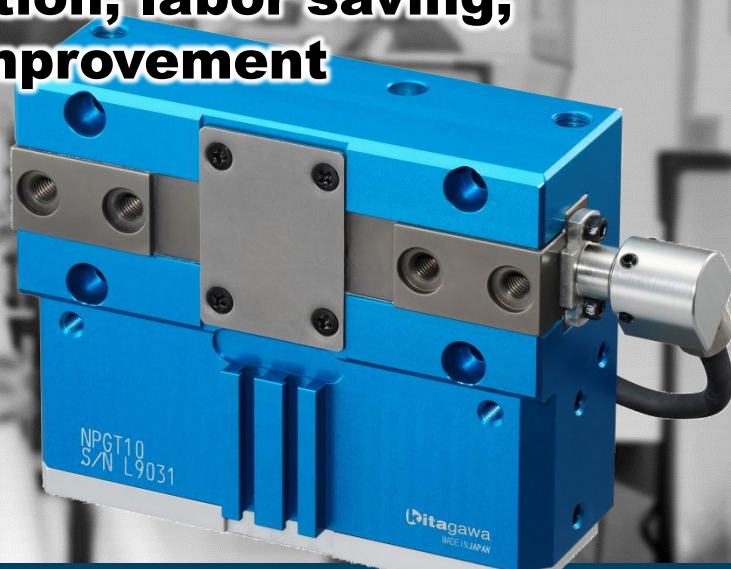


New usage of industrial robots

Check dimensions while transporting
Contribute to automation, labor saving,
productivity improvement

NEW



Thin 2-jaw parallel gripper with measuring function NPGT_S series

The NPGT_S series contributes to process consolidation, unmanned / labor saving operation, quality stabilization, traceability improvement, and preventive maintenance of your manufacturing line.

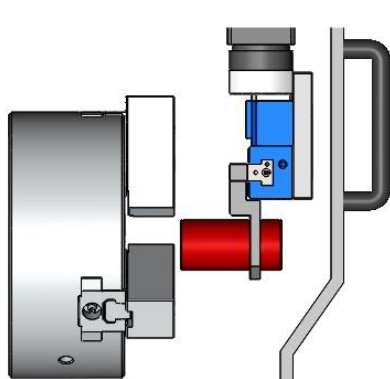
By adopting an elliptical piston, a thin body and high gripping force have been realized.

Model	Size (mm)	Jaw Stroke (mm)	Gripping Force (N)		Mass (kg)
	HxWxD		OD	ID	
NPGT08S	83x98x36	16.6	600	500	0.79
NPGT10S	95.5x120.4x41	20.8	1000	860	1.25
NPGT12S	116x150.4x53	26.4	2000	1700	2.45

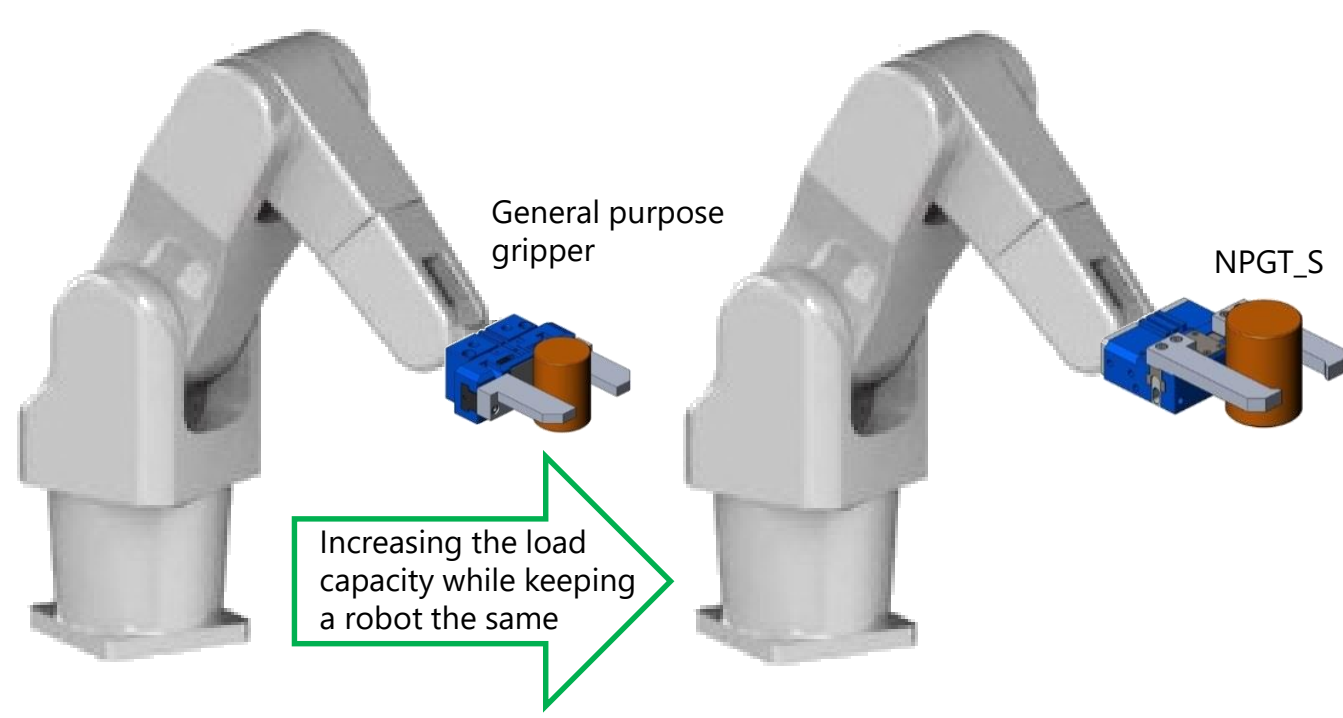
Note) Gripping forces are at supply air pressure 0.6MPa

Thinner by up to 39% compared to general-purpose type with similar gripping force (compared to our company's product)

Easily carry work into a narrow space

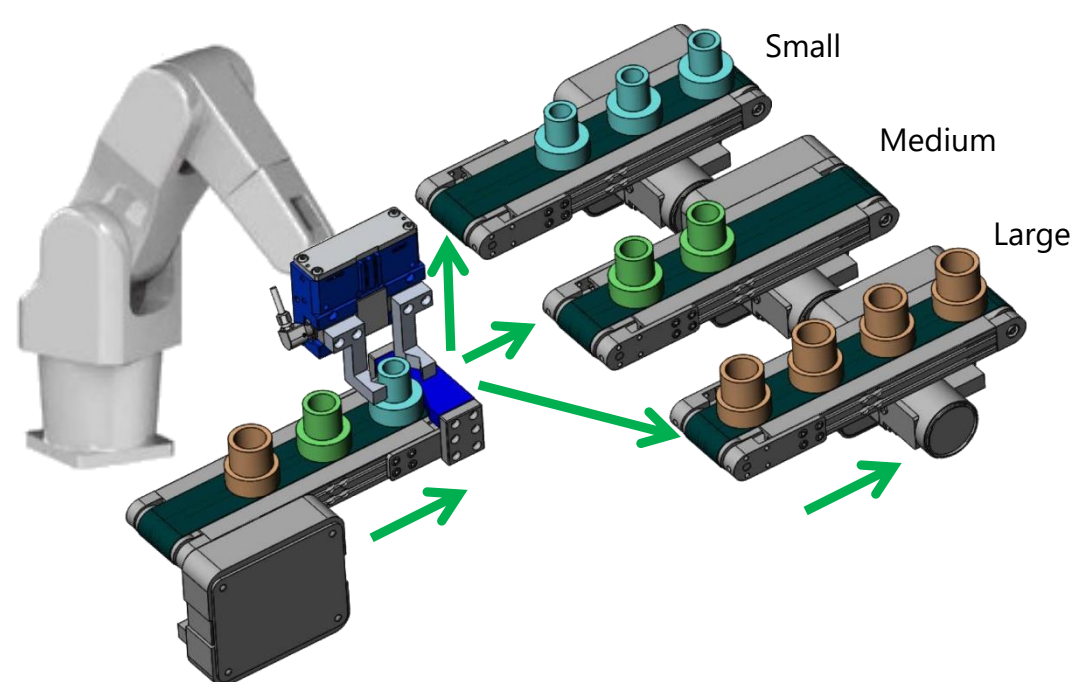


High grip force up to 1.6 times that of general-purpose type with similar stroke (compared to our company's product)



In addition, the NPGT_S series has a length measurement function, so you can perform not only transportation but also various complex tasks.

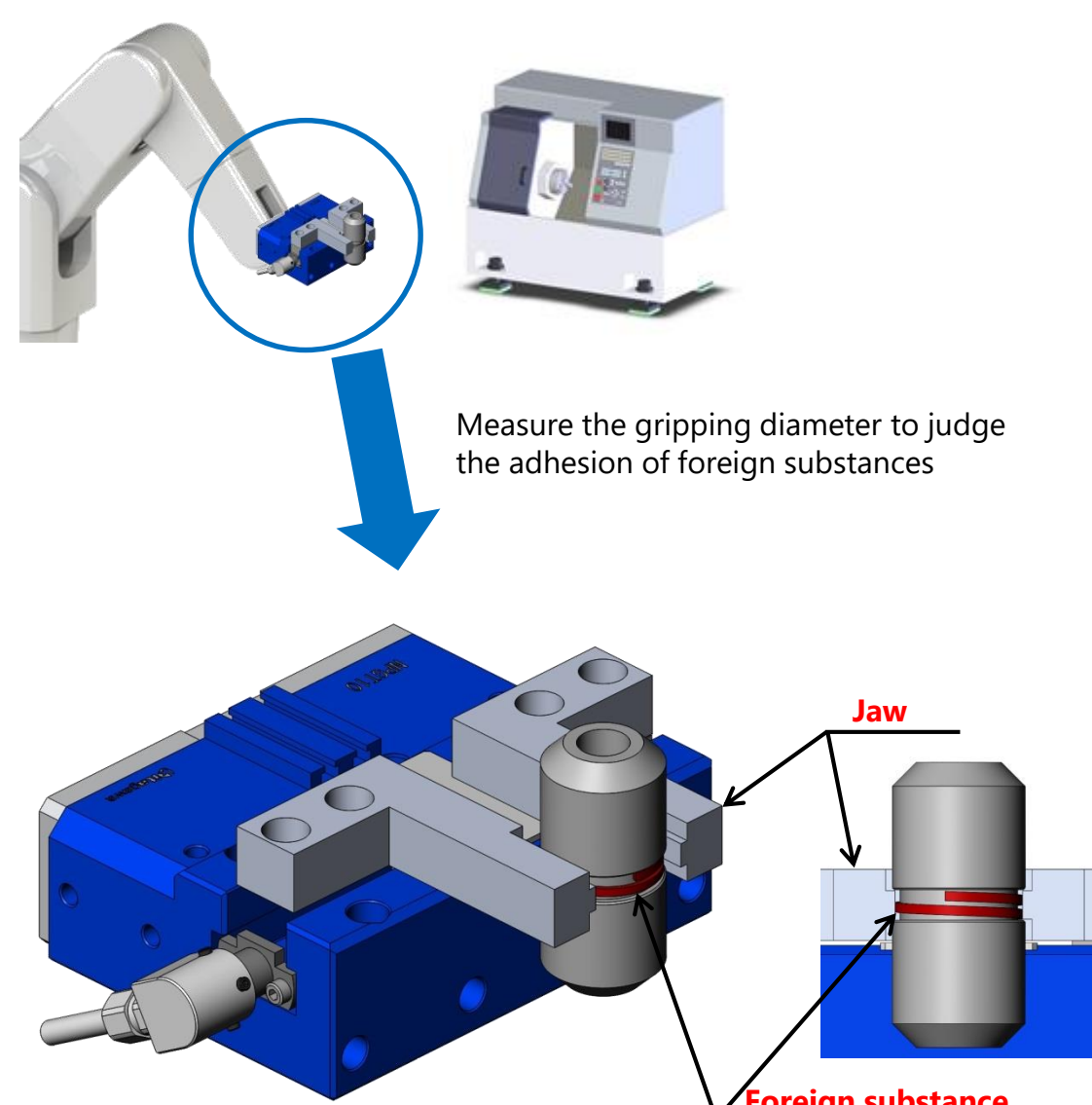
Sorting by the diameter for the next process while transporting



In-process inspection automatically during transportation between processes



Detects adhesion of swarf after lathe grooving



Demonstration video of NPGT_S



Or type <https://youtu.be/jpAUDnFhjrA> on your browser.

Click the image for technical information such as drawings, gripping force curves, catalogs, and instruction manual.



Or type <https://www.kitagawa.com/en/mtools/robohand/2np/npgt-s-series.html> on your browser