

## External Option : Solder Terminal with Cable

Master Cylinder  
model SWLZ0C0-M <sup>01</sup>/<sub>02</sub>

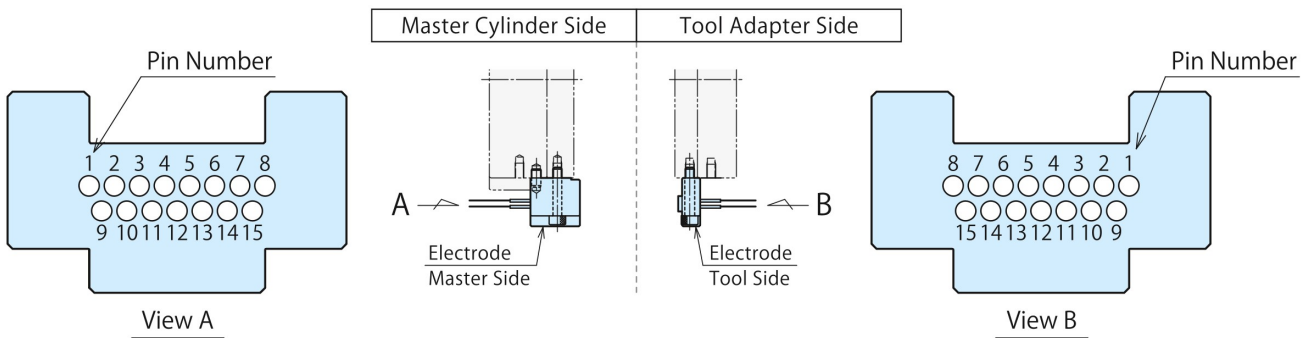
Tool Adapter  
model SWLZ0C0-T <sup>01</sup>/<sub>02</sub>

## Specifications

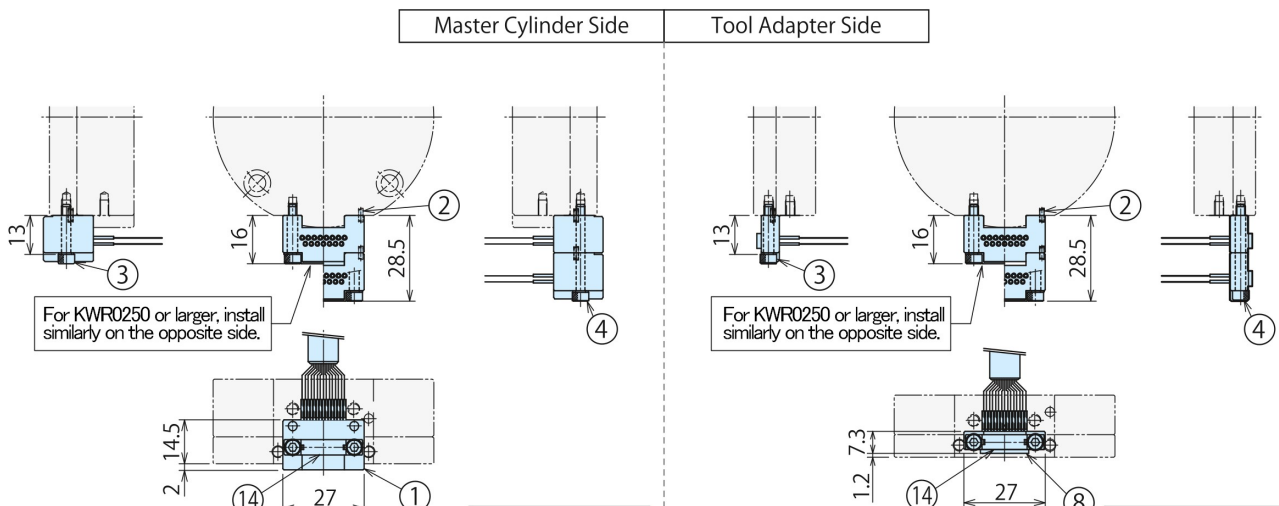
Rated Value (per contact)	DC 24V 3A	
Contact Resistance (Initial Value)	100mΩ or less	
Total Current Capacity	10A	
Number of Poles (per electrode)	15	
Lead Wire Length	01	1m
	02	2m
Weight ※1	Master Cylinder Side	Electrode 01 : 120g / 02 : 230g
	Tool Adapter Side	Electrode 01 : 110g / 02 : 220g

※1. Weight per electrode.

## Pin Numbers



## External Dimensions (KWR0070/KWR0120/KWR0250/KWR0500)



Model No.	No.	Name	Quantity	
			15 poles	30 poles <small>KWR0120 or smaller</small> / <small>KWR0250 or larger</small>
SWRZ0C0 -M01/M02	①	Electrode (Master Side)	1	2
	②	Parallel Pin $\phi 1.5 \times 4$ B Type (SUS)	2	4
	⑭	Bolt Cover	1	1 2
	③	Hexagon Socket Bolt M3×0.5×16(SUS)	2	- 4
- ※3	④	Hexagon Socket Bolt M3×0.5×30(SUS)	-	2 -

Model No.	No.	Name	Quantity	
			15 poles	30 poles <small>KWR0120 or smaller</small> / <small>KWR0250 or larger</small>
SWRZ0C0 -T01/T02	⑧	Electrode (Tool Side)	1	2
	②	Parallel Pin $\phi 1.5 \times 4$ B Type (SUS)	2	4
	⑭	Bolt Cover	1	1 2
	③	Hexagon Socket Bolt M3×0.5×16(SUS)	2	- 4
- ※3	④	Hexagon Socket Bolt M3×0.5×30(SUS)	-	2 -

- Notes :
- The connected part of the solder terminal and lead wire is isolated with a thermal contraction tube.
  - For SWRZ0C0-□01/02 the lead wire length is different. (SWRZ0C0-□01 : Lead Wire Length 1m, SWRZ0C0-□02 : Lead Wire Length 2m)
  - Customers must provide the mounting bolts for expansion with KWR0120 or less.
  - This option can be expanded up to 30 poles.

