

## External Option : D-SUB Connector

Master Cylinder  
model **SWRZ0D0-M**

Tool Adapter  
model **SWRZ0D0-T**

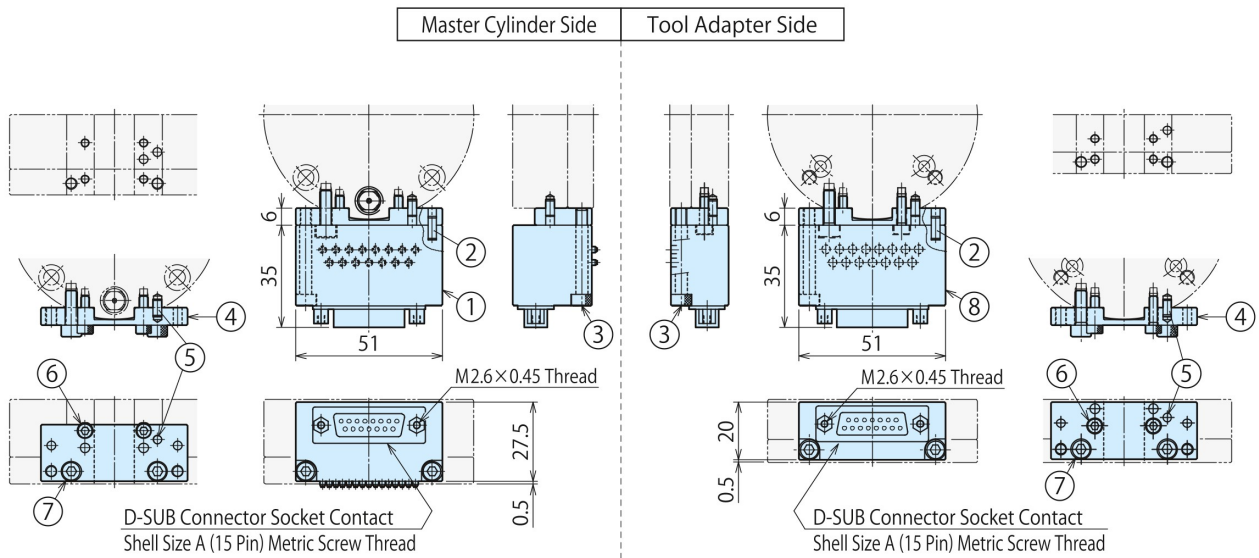
### Specifications

Rated Value (per contact)	DC 24V 3A
Contact Resistance (Initial Value)	100mΩ or less
Total Current Capacity	10A
Number of Poles (per electrode)	15
Weight※1	Master Cylinder Side Electrode 80g / Bracket 17g
	Tool Adapter Side Electrode 70g / Bracket 17g

※1. Weight per electrode.

Bracket weight shows the weight of SWRZ0Z0.

### External Dimensions (KWR0250/KWR0500)



Model No.	No.	Name	Quantity
SWRZ0D0-M	①	Electrode (Master Side)	1
	②	Parallel Pin $\phi 3 \times 8$ B Type (SUS)	2
	③	Hexagon Socket Bolt M4×0.7×30 (SUS)	2
Bracket SWRZ0Z0	④	Bracket (Common for Master/Tool Side)	1
	⑤	Parallel Pin $\phi 3 \times 8$ B Type (SUS)	1
	⑥	Hexagon Socket Bolt M3×0.5×10 (SUS)	2
	⑦	Hexagon Socket Bolt M4×0.7×12 (SUS)	2

Model No.	No.	Name	Quantity
SWRZ0D0-T	⑧	Electrode (Tool Side)	1
	②	Parallel Pin $\phi 3 \times 8$ B Type (SUS)	2
	③	Hexagon Socket Bolt M4×0.7×30 (SUS)	2
Bracket SWRZ0Z0	④	Bracket (Common for Master/Tool Side)	1
	⑤	Parallel Pin $\phi 3 \times 8$ B Type (SUS)	1
	⑥	Hexagon Socket Bolt M3×0.5×10 (SUS)	2
	⑦	Hexagon Socket Bolt M4×0.7×12 (SUS)	2