

External Option : Ethernet Electrode

Master Cylinder
model SWRZ0L0-M

Tool Adapter
model SWRZ0L0-T

Specifications

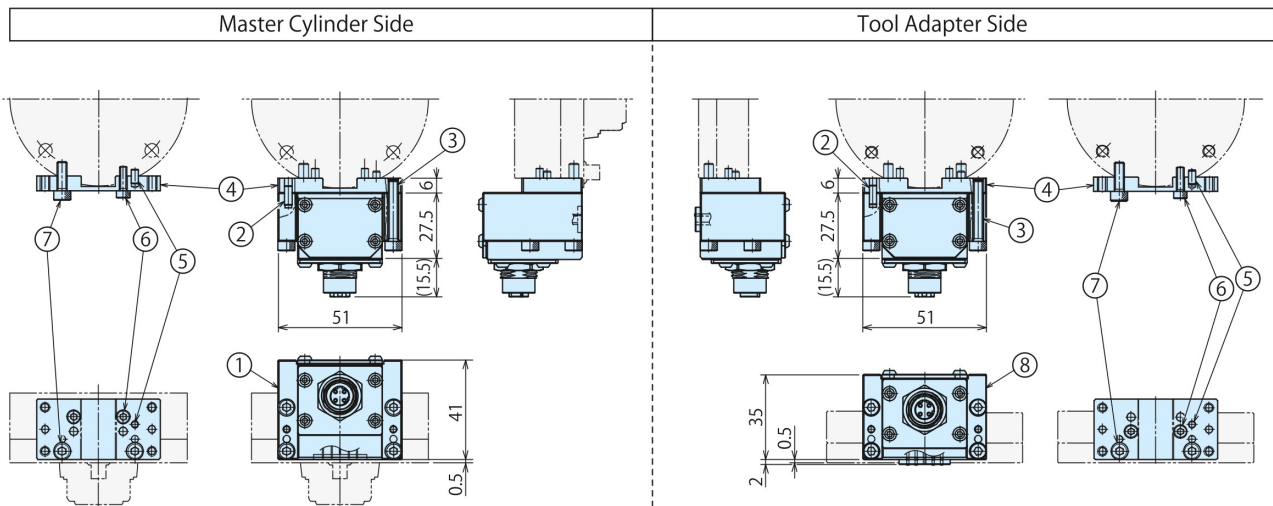
Rated Value (per contact)	DC 30V 0.5A	
Number of Poles (per electrode)	4	
Connector	M12 D-code 4 poles (female) (based on IEC61076-2-101)	
Ethernet Applicable Standard	100BASE-TX ※3	
Transmission Speed	100Mbps ※3	
Category	CAT5	
Applicable Fieldbus	EtherNet/IP EtherCAT PROFINET Modbus TCP CC-Link IE Field Network Basic ※2	
Weight※1	Master Cylinder Side	Electrode : 106g Bracket : 16g
	Tool Adapter Side	Electrode : 96g Bracket : 16g

※1. Weight per electrode. Bracket weight shows the weight of SWRZ0E0.

※2. Cannot be used with a fieldbus that requires a communication speed of 1Gbps such as CC-Link IE.

※3. In the case transmission speed of Ethernet applicable standard 1000BASE-T (transmission speed : 1 Gbps) is required, please contact us.

External Dimensions (KWR0250/KWR0500)



Model No.	No.	Name	Quantity
SWRZ0L0-M	①	Electrode (Master Side)	1
	②	Parallel Pin $\phi 3 \times 8$ B Type (SUS)	2
	③	Hexagon Socket Bolt M4×0.7×25 (SUS)	4
SWRZ0E0	④	Bracket (Common for Master/Tool Side)	1
	⑤	Parallel Pin $\phi 3 \times 6$ B Type (SUS)	1
	⑥	Hexagon Socket Bolt M3×0.5×10 (SUS)	2
	⑦	Hexagon Socket Bolt M4×0.7×12 (SUS)	2

Model No.	No.	Name	Quantity
SWRZ0L0-T	⑧	Electrode (Tool Side)	1
	②	Parallel Pin $\phi 3 \times 8$ B Type (SUS)	2
	③	Hexagon Socket Bolt M4×0.7×25 (SUS)	4
SWRZ0E0	④	Bracket (Common for Master/Tool Side)	1
	⑤	Parallel Pin $\phi 3 \times 6$ B type (SUS)	1
	⑥	Hexagon Socket Bolt M3×0.5×10 (SUS)	2
	⑦	Hexagon Socket Bolt M4×0.7×12 (SUS)	2